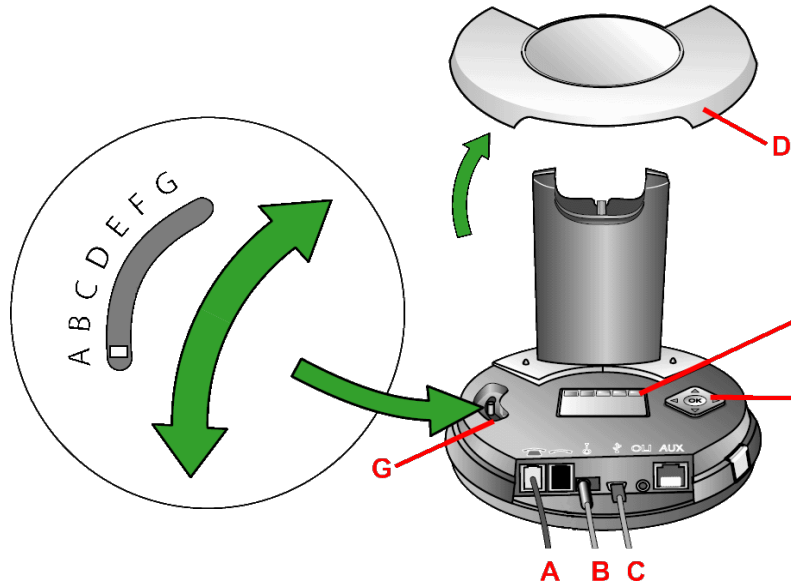


Jabra GN 9350

Welcome to Microsoft Office Communicator 2007!

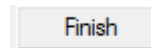
Using this headset with Office Communicator will provide a simple, more consistent audio experience than using the microphone and speakers on your computer (if available). You can also use this headset to answer calls on your Deskphone.



Setup Instructions:

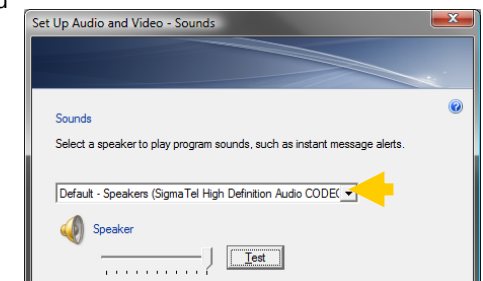
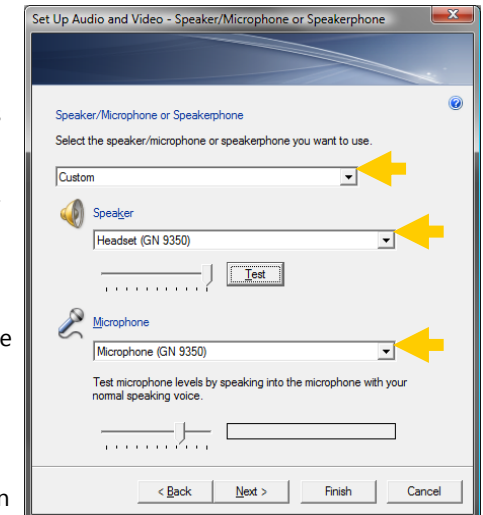
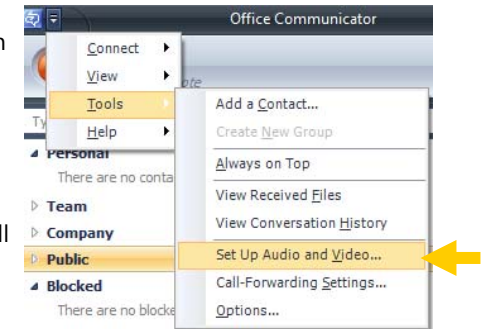
After connecting and configuring your hardware following the instructions to the left, follow these instructions to finish your setup:

1. Connect the headset to the base and allow to fully charge. 4 green LED's on the front of the base will light up from left to right as the headset charges. The headset is fully charged when all 4 LED's are lit. (this will take about 3 hours)
2. Open Communicator 2007 R2
3. Click the drop down arrow on the upper left corner
4. Select the **Tools** option
5. Select **"Set Up Audio and Video..."**
6. On the first pane you will set the Handset or Headset you want to use. Make sure that **Headset (GN9350)** is selected in the drop down menu.
7. Click **Next**
8. On this pane, you will configure your Speakerphone. If you use a USB speakerphone (like the Polycom CX100) then leave it configured here and skip to step 11.
9. Make sure the **Headset (GN9350)** is listed as your speaker and microphone in the appropriate boxes. (See graphic at right) You may need to set the top drop down menu to **Custom** in order to change these settings.
10. Click **Next**.
11. On the next pane, you will set the audio output location for your program sounds. It is recommended that you use your PC speakers for this setting if you have a sound card and speakers available.
12. When you have selected the output location, click the **Finish** button.

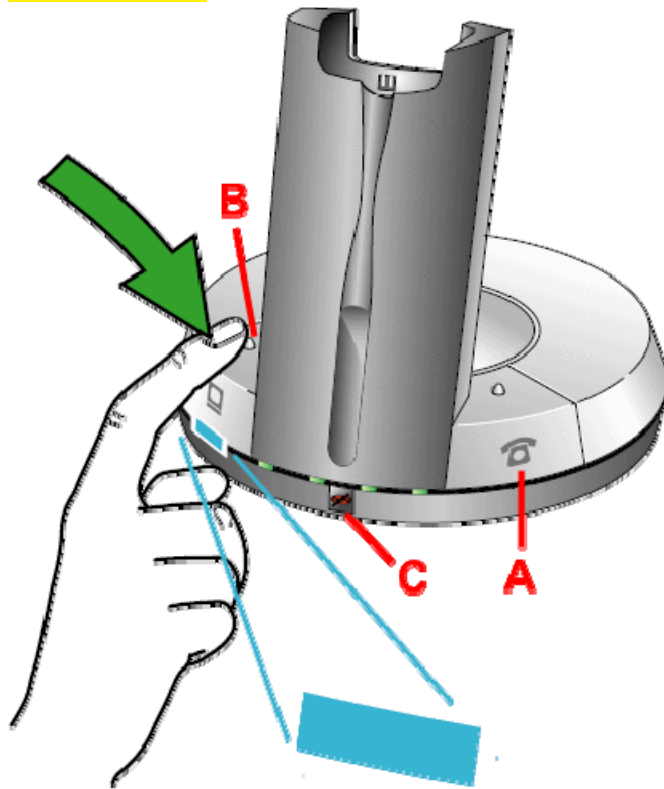


How to Connect and Configure Your Hardware:

1. First, be sure to connect your GN9350's cables:
 - A. Connect the port labeled with a telephone icon (A) to the headset port in the back of your phone.
 - B. The power cable (B) is connected to power.
 - C. The USB port (C) is connected to a USB port on your computer.
2. Next, remove the cover from the base (D)
3. Your configuration settings are shown on the LCD display (E) and you scroll through them and set them with the directional pad (F)
4. Working through the settings tab from left to right, make sure they are set to the following settings:
 - Transmit Volume: 8/12
 - Hookswitch: GN RHL
 - Range/Power: Very Low
 - Sound Mode:
 - A. At the top of the list select Normal
 - B. Scroll down to the bottom of the list and select Switch
 - Protection Level (Intellitone): Level 0
5. Finally, set the Clear Dial Tone Switch (G) to position A



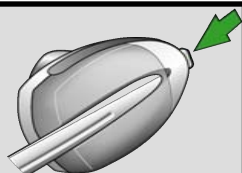
Jabra GN 9350



IMPORTANT: The GN9350 can be used as a headset for a deskphone as well as a USB headset for Office Communicator. It is in desktop mode by default, as indicated by a blue LED below the deskphone button on the base (A).

- Pressing the Answer/Release button on the headset will pick up the call in whichever mode is set to default.
- The connection to the headset is active when the blue LED is flashing
- To switch to USB mode temporarily, press the USB button on the base (B).
- To set USB mode as the default mode, press and hold the USB button on the base for 5 seconds until the blue LED button below the USB button is lit.

TIP: The GN9350's microphone can be muted by pressing in on the volume rocker on the headset. A red LED will be lit on the base while the microphone is muted (C).

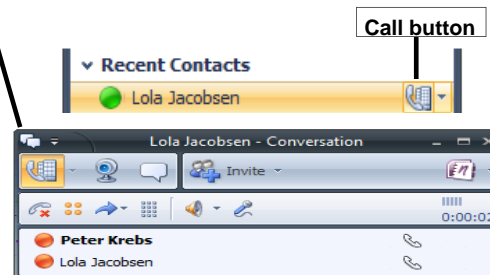


To Make a Call with Communicator 2007

One click calls:

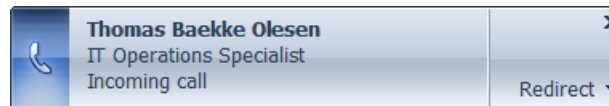
Make sure the GN9350's base is in USB mode. (Refer to Important note on the left side of this page) Then:

- Make one-click phone calls to contacts in your contact list by selecting their name and clicking the **call button**. A call window will pop up.

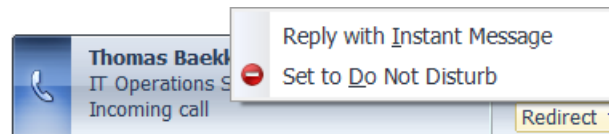


To Receive a Call with Communicator 2007

- You will see a call notification on your computer screen when you receive a telephone call. Click the USB button on the GN9350's base to answer the call. If USB mode is set to default on the base, you can click the headset's answer button to answer the call.



- You can also choose to answer by click on the phone hook with the mouse.
- Finally if you are disturbed in a meeting, you can choose to click 'Redirect' or choose to reply with an Instant Message (you cannot redirect calls to a phone number yet).



Help & Support

See <http://ochelp> for Help and Training.

Or contact the Helpdesk here:

| | |
|----------|--|
| Intranet | http://helpdesk |
| Mail | HelpDesk@gn.com |
| APAC | + 86 592 2617575 |
| EMEA | + 45 45 75 09 11 |
| USA | + 1 603 864 6675 |