

Microsoft Teams and Jabra Evolve 65e: the perfect partnership for on-the-go sales execs and professionals

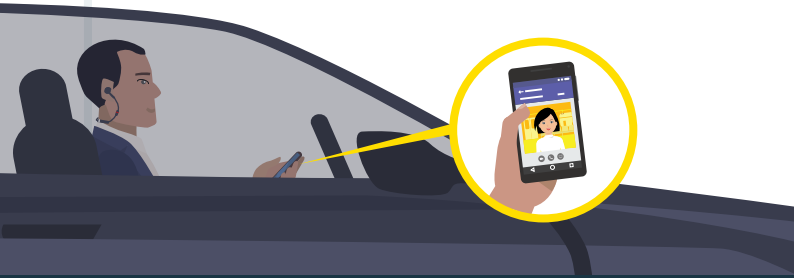
When you're busy communicating and always on the move - you need comfort, convenience and consistently superior sound for maximum concentration and productivity. Welcome to your day with Microsoft Teams and the Jabra Evolve 65e.



First call of the day

Out on the road, you pick up a Teams call on your mobile from your most important customer.

Thanks to the crystal-clear sound and rock-solid smartphone connection, the call is a productive one.



Time to call the team together

The call earlier was about a big opportunity, so when you get to the office, you call a Teams meeting to discuss and share your sales proposal with everyone.

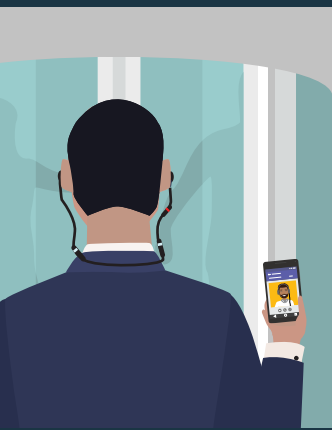
With the USB Bluetooth adapter, your Evolve 65e is already connected to your laptop, as well as your phone, so you don't waste any time connecting.



Back on the road

Another customer to meet, another Teams meeting to join on the way.

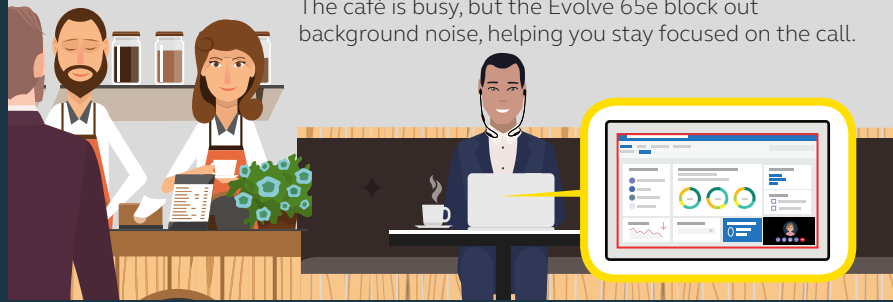
But that's no problem; the Evolve 65e is built for all day comfort, with lightweight round-the-neck design.



A quick stop for lunch

Now, time for a working lunch. You're back on a Teams meeting to finalize the sales proposal.

The café is busy, but the Evolve 65e block out background noise, helping you stay focused on the call.



Power through your evening

Thanks to a 13-hour battery life, the Evolve 65e is still going strong at the end of the day.

It's also great for music and has snug-fitting earbuds, so you can have a walk in the park and listen to your favorite tunes, to unwind after a stressful day.



Jabra Evolve 65e earbuds are engineered to deliver professional UC-certified sound on the go. Perfect for Microsoft Teams and for the lifestyles of the busiest mobile professionals. Find out more at Jabra.com/Microsoft