

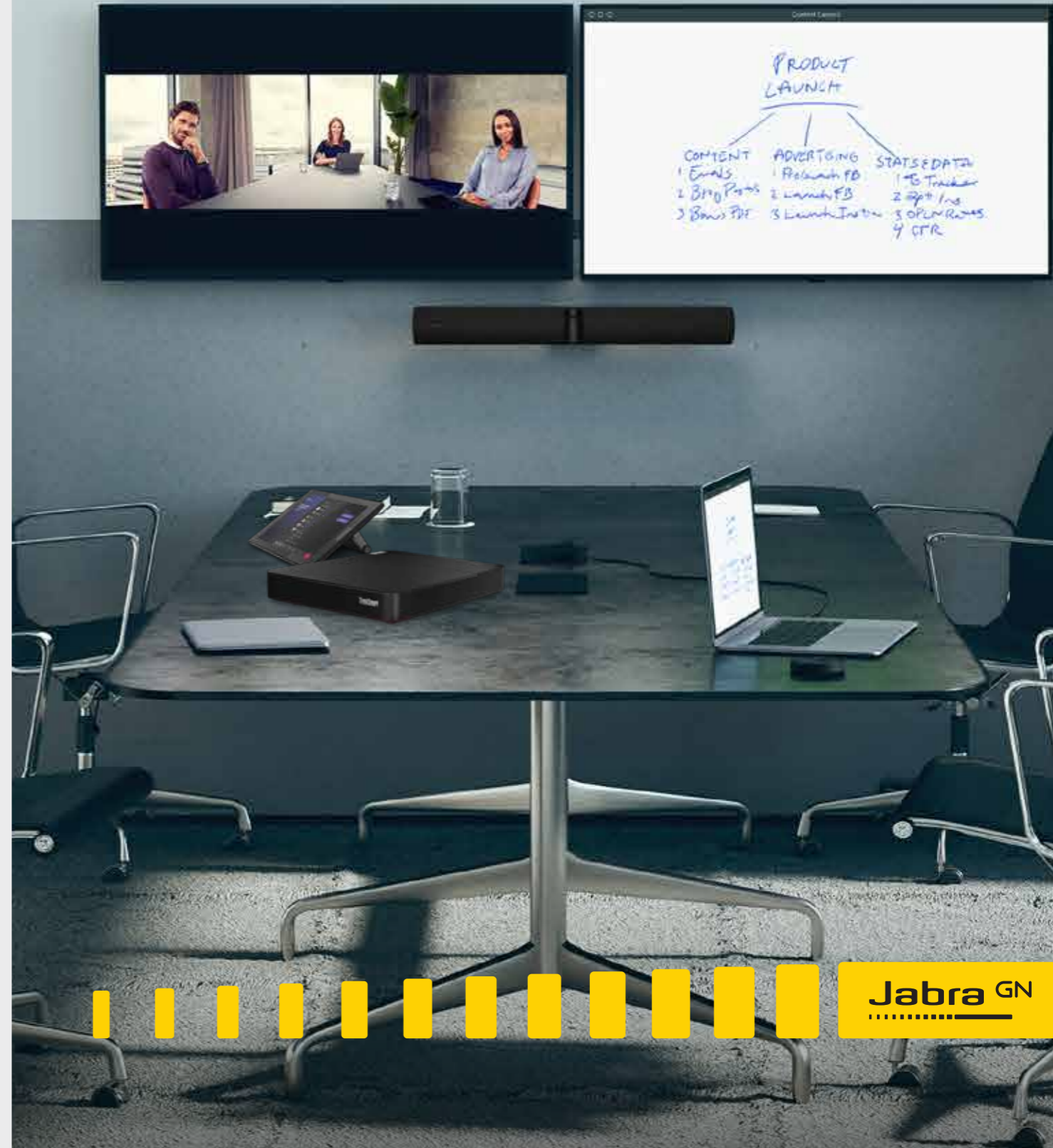
Jabra & Lenovo collaboration solution

Collaboration made easy



Collaboration made easy
with Jabra PanaCast and Lenovo

jabra.com/PanaCast



© 2021 GN Audio A/S. All rights reserved. ® Jabra is a registered trademark of GN Audio A/S. The information contained in this guide is based on the best efforts of Jabra to include all necessary, available and appropriate information at the time of its creation. Some products may be undergoing certification at the time of writing. Call control functionality may require the latest softphone software. Not all Jabra products support older softphone versions. Any advice contained in this guide is of a general nature only, and should be independently verified before purchase or other action. Jabra is not responsible for any claims arising from errors or out-of-date information contained within this guide. The Bluetooth® word mark and logos are owned by the Bluetooth SIG, Inc. and any use of such marks by Jabra is under license. Product design and specifications are subject to change without notice.

GN Making Life Sound Better
FOR 150 YEARS

In cooperation with:
Lenovo

All pictures shown are for illustration purpose only. Actual product may vary due to product enhancement.



PanaCast 50

Engineered to be the first new-normal-ready intelligent video bar*



We've gone all-in on getting you all in.

Whatever setup you're running these days, with PanaCast 50, your teams can still meet in person while keeping a safe distance from each other. Patented real-time video stitching technology automatically joins the streams from three 13-megapixel cameras together live, with near zero latency, creating a smooth, 180° field of view in Panoramic-4K. It's videoconferencing, but not as you know it.



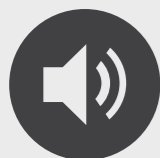
Fully immersive meetings, for everyone.

Virtual Director uses both AI-based video and audio streams, as well as our proprietary intelligent algorithms, to automatically adjust the frame, delivering a remote meeting experience that's fully immersive and responsive. Our AI technology understands what's happening in the room and reacts accordingly, detecting and perfectly framing active speakers without cutting the people around them off, for more dynamic remote collaboration.



Make your meeting rooms safe again.

Safety Capacity and Room Usage Insights generate anonymous room occupancy data for your meeting rooms, notifying you (and whoever is in the room) in real time as soon as your pre-defined guidelines are exceeded. In addition to two independent video streams, a third independent data stream maintains a constant 180° view, ensuring full room coverage for PeopleCount data. So there's no chance of participants being missed because they're out of frame, or because both video streams are zoomed in on a specific person or piece of content.



Sound that astounds.

We've reinvented meeting room audio for modern working, with eight professional-grade beamforming microphones, backed up with intelligent algorithms to remove disruptive noise. An array of four powerful Jabra-engineered speakers, in a zero-vibration stereo setup, fill the room with high-definition audio, while the latest 2-way audio technology delivers more natural conversations.



Share your whiteboard with the world.

We've reinvented the whiteboard for modern working, with our innovative new whiteboard content camera feature. Our 180° field of view allows you to share your whiteboard content in real time, regardless of where the whiteboard is installed in the room. Our intelligent software automatically corrects the perspective to ensure the best view, while enhancing the image in real time, reducing shine, gloss, and shadows, and enhancing color and contrast of the content. Dual video streams allow you to display both the whiteboard and those present in the meeting at the same time. And unlike other brands, the feature is built in.



Ultra-advanced system architecture.

A total of nine powerful general and special purpose processors, including two state-of-the-art Edge AI processors, power the audio, video and intelligence features of PanaCast 50. Our ultra-advanced system architecture enables Jabra PanaCast 50 to carry out real-time integration of audio, video and data. This enables intelligent features such as Virtual Director and our always-on PeopleCount, allowing us to deliver a meeting experience that's not just better, it's completely reinvented.

*See facts on jabra.com/commercial-claims.

ThinkSmart Core Kits with Microsoft Teams Rooms

Scalable, configurable, complete modular room solutions from Lenovo

Lenovo makes it easy to incorporate smarter collaboration technology into meeting rooms of all sizes with the new ThinkSmart Core Kits with Microsoft Teams Rooms. These purpose-built, modular room kit solutions start with ThinkSmart Core, a compute that is powered by 11th Gen Intel® Core™ vPro™ processors with Intel® Iris® Xe graphics for optimized business productivity and collaboration. ThinkSmart Core is certified and preloaded with Microsoft Teams Rooms to help employees connect, share, and collaborate seamlessly and securely from wherever they may be working. Also included is ThinkSmart Controller, a 10.1-inch, 10-point touch HD display with anti-glare and anti-fingerprint coating.



ThinkSmart Core



EASY TO CHOOSE

When it comes to room system computes, ThinkSmart Core is the smarter choice with its powerful 11th Gen Intel® Core™ vPro® processor and Intel® Iris® Xe graphics, secure and trusted Windows 10 IoT Enterprise operating system, ports to support multiple audio and visual accessories, and integrated cable management.



EASY TO MANAGE

IT teams can monitor, manage, and troubleshoot ThinkSmart Core remotely using pre-loaded ThinkSmart Manager software.¹ ThinkSmart Core also comes bundled with one year of Smart Collaboration Professional Services Deploy and Maintain for personalized support during setup and ongoing maintenance.



EASY TO TRUST

Built-in security solutions from Lenovo ThinkShield and Microsoft offer two more layers of protection on top of the Intel® vPro® platform, which provides the world's most comprehensive hardware-based security for business.



ThinkSmart Controller



EASY TO SHARE

The 10.1-inch, 10-point touch display allows users to initiate and control the meeting, share content, collaborate face-to-face.



EASY TO USE

ThinkSmart Controller features the familiar Microsoft Teams Rooms interface, making it easy for onsite employees to collaborate with colleagues working remotely.



EASY TO SEE

Collaborating with colleagues working remotely is easy with a 16:10 aspect ratio and 1280 x 800 resolution. And no more smudges clouding the view thanks to the Controller's anti-glare and anti-fingerprint display.



Professional video conferencing at the touch of a button

Wouldn't it be nice if video conferencing could be fast, simple and give you exactly what you need at the touch of a button? With the brand-new bundle from the experts at Jabra and Lenovo, you can finally get your hands on a video collaboration solution that's as straightforward as your morning cup of coffee. Two of the biggest names in digital collaboration have partnered to bring you the most superior video and audio components in one tidy package - so your meetings are only a touch away.



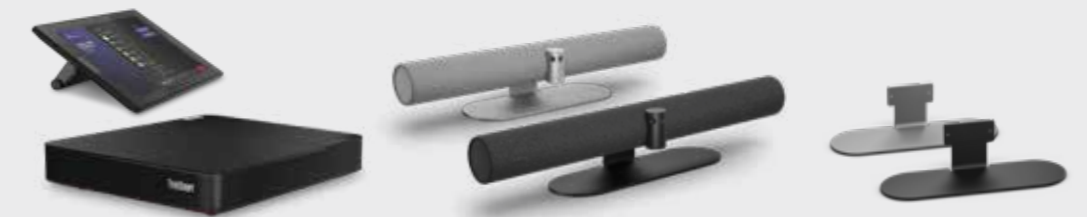
Workspace:



Huddle room



Softphone



JABRA & LENOVO

Jabra PanaCast 50 & Lenovo ThinkSmart Core + Controller (Kit) is compatible with all leading video & audio conferencing solutions as well as certified for Microsoft Teams.



	ThinkSmart Core + Controller	Jabra PanaCast 50 (Grey/Black)	Table Stand [^] (Grey/Black)
Description/ Scope of delivery	<p>Powered by 11th Gen Intel® Core™ vPro™ processors with Intel® Iris® Xe graphics for optimized business productivity and collaboration. ThinkSmart Core is certified and preloaded with Microsoft Teams Rooms to help employees connect, share, and collaborate seamlessly and securely from wherever they may be working.</p>	<p>Jabra PanaCast 50 Intelligent Video bar with 180° field of view (optimized for all leading UC platforms, including Microsoft Teams). Wall mount, 2 meter USB 3.0 Type C to A, Power supply.</p>	<p>Table mount (stand) for Jabra PanaCast 50.</p>
SKU		<p>8201-231 (Grey) 8200-231 (Black)</p>	<p>14207-70 (Black) 14207-75 (Grey)</p>

*Included for first year. Available at an additional cost on subscription basis after that. [^]PanaCast 50 Table Stand is an optional accessory.

The Setup for your conference room

Jabra PanaCast 50 can be used in all kinds of rooms, big and small. The below diagram offers tips on how to ideally place the device in order to achieve the best video conferencing experience for all participants. We generally recommend two screens for large conference rooms. In addition, meeting participants should not be no closer than 90 cm / 36 inches to the screen.

