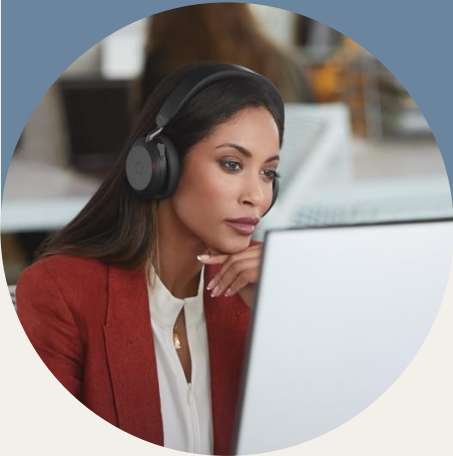


Battery Replacement Guide

Jabra Evolve2 75



Information relating to removal and/or replacement of the battery is intended for authorized service technicians only. The products and related accessories are designed to be used only in accordance with the applicable user guide provided and by using the products/accessories (including batteries), the user agrees to have read and understood the applicable user guide, including but not limited to all instructions for use, cleaning and maintenance of the products/accessories and the warnings contained therein, prior to using the products. Information contained herein is not intended to be technical advice and should not be relied upon as such and you are strongly encouraged to consult with a qualified professional and/or authorized service technician.



Required equipment

1x T6 screwdriver

1x T5 screwdriver

1x Tweezers

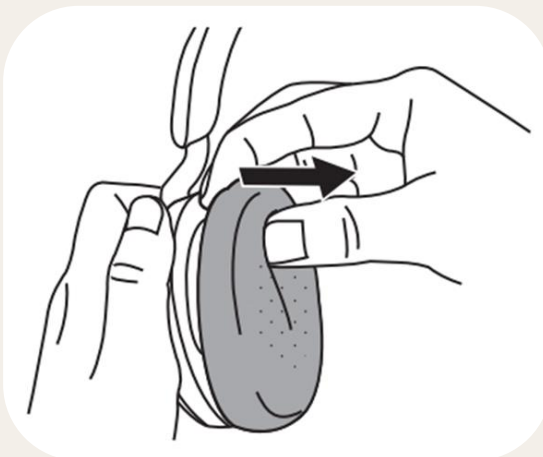
1x Cloth

1x Anti-static wristband / ESD bracelet

1

Remove ear cushion

Remove the ear cushion on the **Left** ear cup by gently pulling the cushion outwards from the top.



2

Remove the 4 screws

See the image below for screw locations.
(screw specifications: FP1.8x6.0, CYL, TX, T6)



3

Disconnect the cable

Use tweezers to pull out the battery cable.



4

Remove the battery

Take note of how the battery is positioned, so the new battery is also placed in the same position. Pry up the battery slowly and carefully.



5

Remove adhesive residue

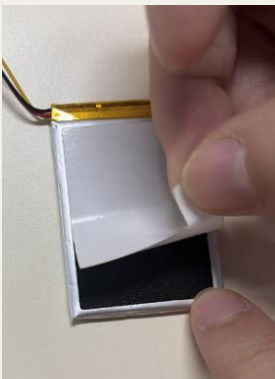
Use the cloth to clean any adhesive residue from the cover plate.



6

Insert the new battery

Remove the film and place the battery adhesive side down.



7

Connect the battery cable



8

Reassemble earcup

Replace the ear cup cover and fasten the screws.



9**Replace ear cushion**

Align the ear cushion with the clips and press. There will be audible clicks when they are in place.

