



PANACAST 50

# Meeting Room Set-up Guide

# Expert collaboration from the experts in collaboration

## We've gone all-in on getting everyone all in

PanaCast 50 is built for inclusion so our video technology keeps everyone in the frame. Three 13-megapixel cameras, mounted in a high-precision multi-camera array, cover every part of the room so no one falls off the end of the screen. Our patented real-time video stitching technology intelligently decides exactly the right point to live-stitch the three camera feeds together, creating a seamless 180° view in high-definition Panoramic-4K.

## Incredible world-leading audio

We've used our expertise as a world leader in professional sound to give meeting room audio a serious upgrade, ready for all your hybrid collaboration needs. PanaCast 50 adapts to the space you're in, using four powerful speakers in a zero-vibration stereo setup, to fill the room with premium high-definition sound. And it's not just in the room. Eight professional-grade beamforming microphones, backed up with intelligent algorithms, cut down on background noise so remote participants will hear you perfectly too.

## Bring the human touch to virtual meetings

PanaCast 50 automatically detects who's speaking for a remote meeting experience that's fully immersive and responsive. High-power Edge-AI processing chips within the device deploy proprietary algorithms to intuitively follow the meeting, instantly adjusting the frame in real time to focus only on the active speakers. The result is a meeting that puts the most important content front and center.

## Intelligently insightful room data

Making the most of meeting room spaces starts with data on how they're used. Our unique 180° data stream remains constantly focused on the entire room, delivering anonymous people count and room usage data. Jabra Xpress®, our free-to-download management software, analyzes your meeting room data so you can adjust room settings for optimal meeting experiences.

## Share your whiteboard with the world

We've reinvented the whiteboard for hybrid working to let you live-stream your whiteboard content so virtual participants can see it as if they were in the room. Uniquely, the whiteboard feature is built in (no need to buy or set up an extra camera) and powered by our one-of-a-kind 180° field-of-view. Intelligent algorithms automatically capture and live-stream whiteboard content in real-time, so everyone can participate - whether in or out of the room.

## Ultra-advanced system architecture

Nine powerful Edge processors power the intelligent features and real-time integration of audio, video, and data for dynamic immersive meetings. And because we want to keep making your meetings better, our unique adaptable flexible architecture means PanaCast 50 keeps reinventing itself with future-ready feature updates.

## Hit the ground running

PanaCast 50 is designed to make your meetings smoother right from the word go. Clear, simple-to-follow instructions and three different mounting options\*\* to choose from make installation easy, and once you're set up it's plug-and-play all the way. With UC-optimization for all leading virtual meeting platforms including Microsoft Teams and Zoom, you can manage your meeting through your preferred provider or take control of the meeting using the Jabra Sound+ app or optional remote control.\*\*\*

## Don't let the real world interrupt your virtual one

Got an open-plan meeting room or one with glass walls? The Intelligent Meeting Space feature for PanaCast 50 lets you customize your room boundaries using Jabra Direct. Once set, only people inside your specified area are included in the meeting.

\*PanaCast 50 also works with other device management platforms.

\*\*Wall Mount, Table Stand, and Screen Mount (VESA). Table Stand and Screen Mount sold separately.

\*\*\*Sold separately.



Whiteboard

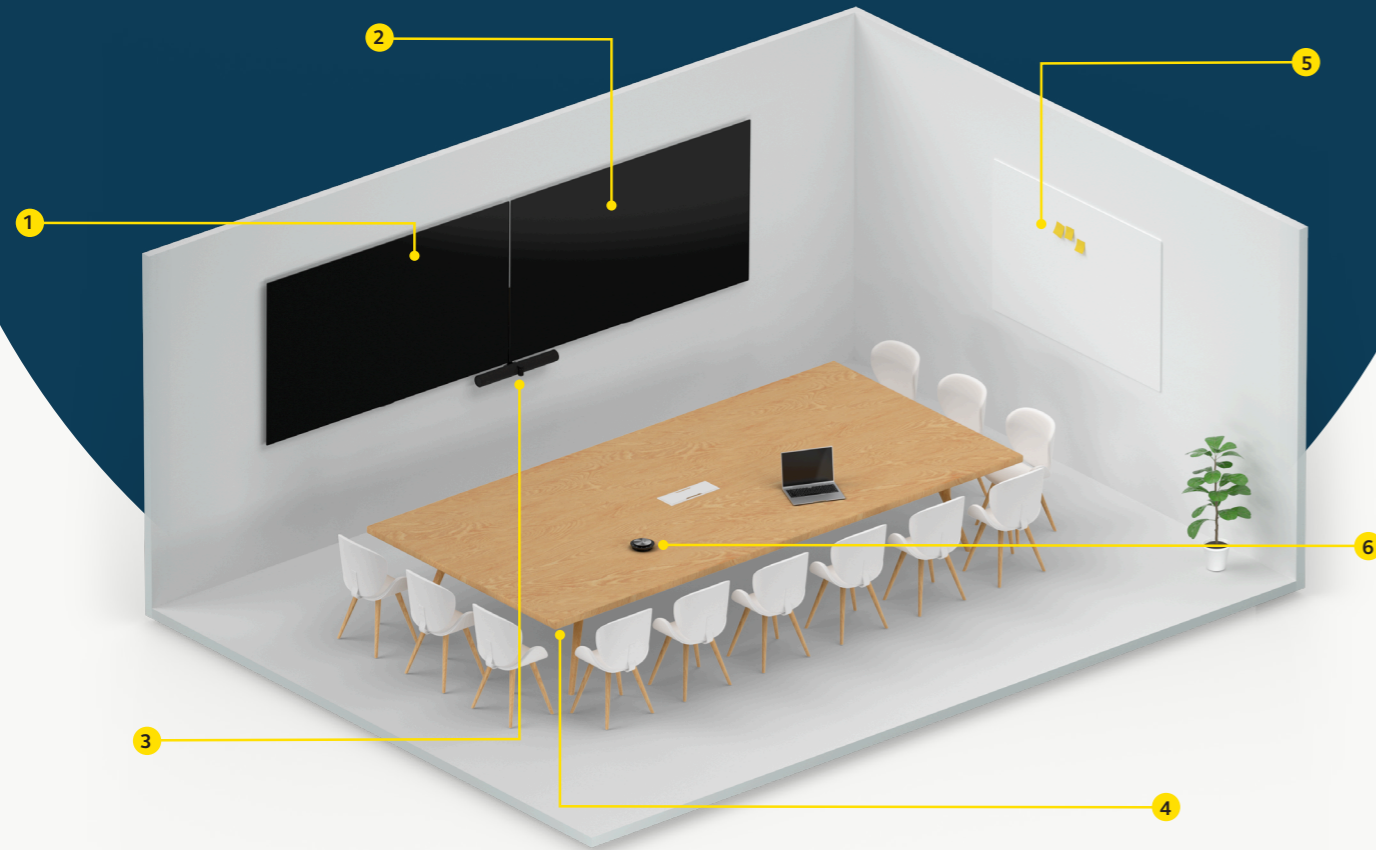
1-2 monitors

Jabra PanaCast 50 mounted centrally underneath the screen(s)

Optional remote control unit

Hub hidden underneath the table to help organize and hide cables

# The setup for your **medium meeting room**

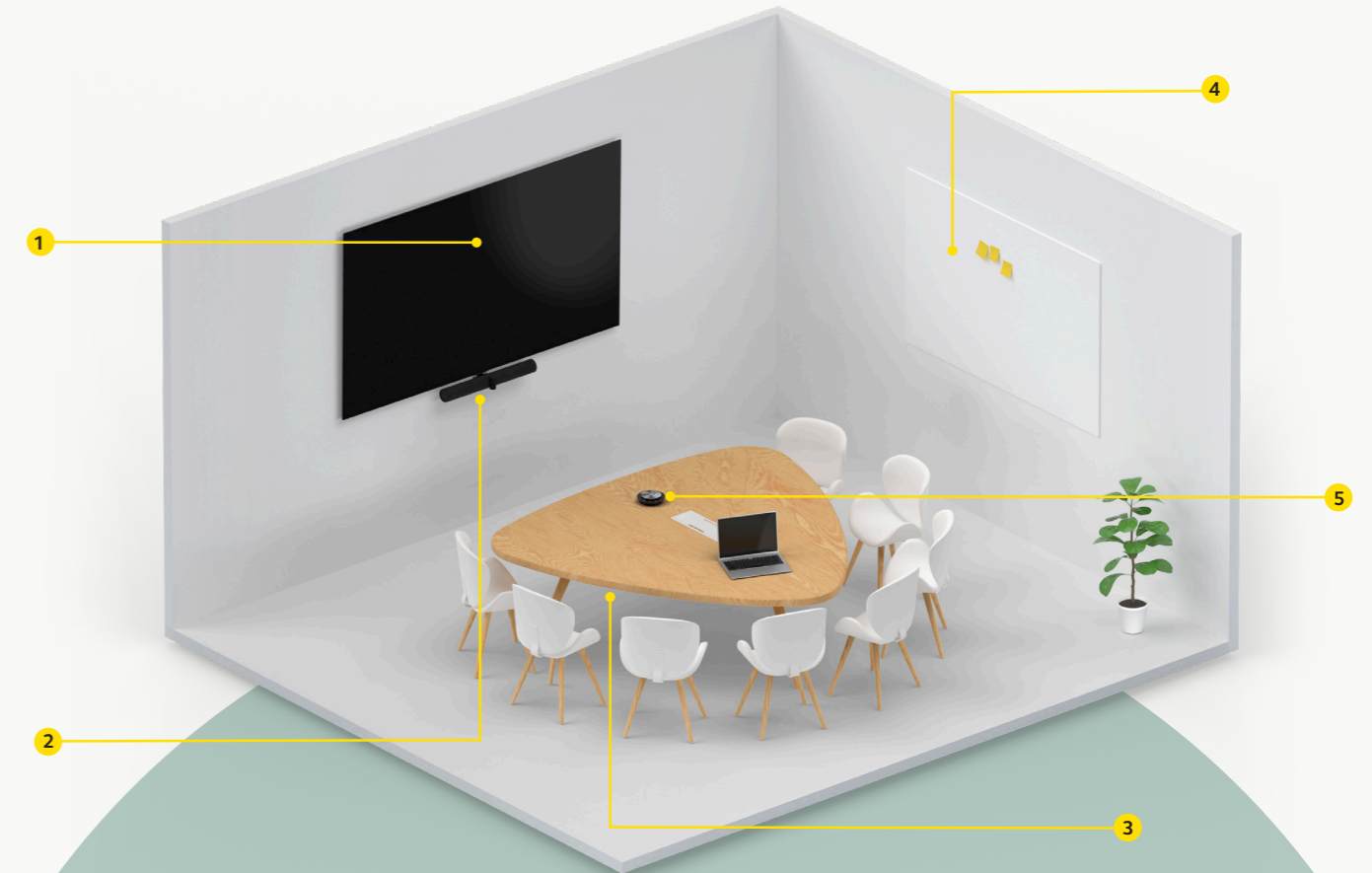


## OPTIMIZED EQUIPMENT PLACEMENT IN A MEDIUM MEETING ROOM

- Two wall-mounted screens: **recommended screen size: 140cm / 55"**
- 1 + 2**
- For optimal viewing of screen(s), recommended placement of first seat is **minimum 90cm / 36"** away
  - Screen placement from the floor when placed underneath the screens: **height 100cm / 39"**
- 
- Video bar placement from floor underneath the screens: **height 100cm / 39"**
- 3**
- Central underneath screen(s)
  - **8cm / 3.2"** from top of wall mount to bottom of screen
- 
- 4** **Hub** (Bring Your Own Device - BYOD - scenario) placed underneath the table to help organize and hide cables
- 
- 5\*** Wall-mounted whiteboard: **recommended size\*\* 1.5 - 2.7 meters in width (5 - 9 feet)**
- 
- 6** **Optional remote control unit**

\* It is recommended that the whiteboard should be positioned within 3.6 meters (12 feet) of the Jabra PanaCast 50, and no closer than 1.5 meters (5 feet). The optimal viewing range is 3 meters (9 feet). It is important to note the Jabra PanaCast 50 camera consists of three separate lenses, arranged horizontally. The whiteboard must be positioned entirely within the view of one of these three lenses. It is recommended to use a standard whiteboard, rather than glass or highly reflective surface. For the best clarity, use black or dark markers to write on the whiteboard.  
 \*\* The recommended size of the whiteboard should be between 1.5 - 2.7 meters in width (5 - 9 feet), however whiteboards measuring between 1 - 3 meters in width (3 - 10 feet) are supported.

# The setup for your **small meeting room**

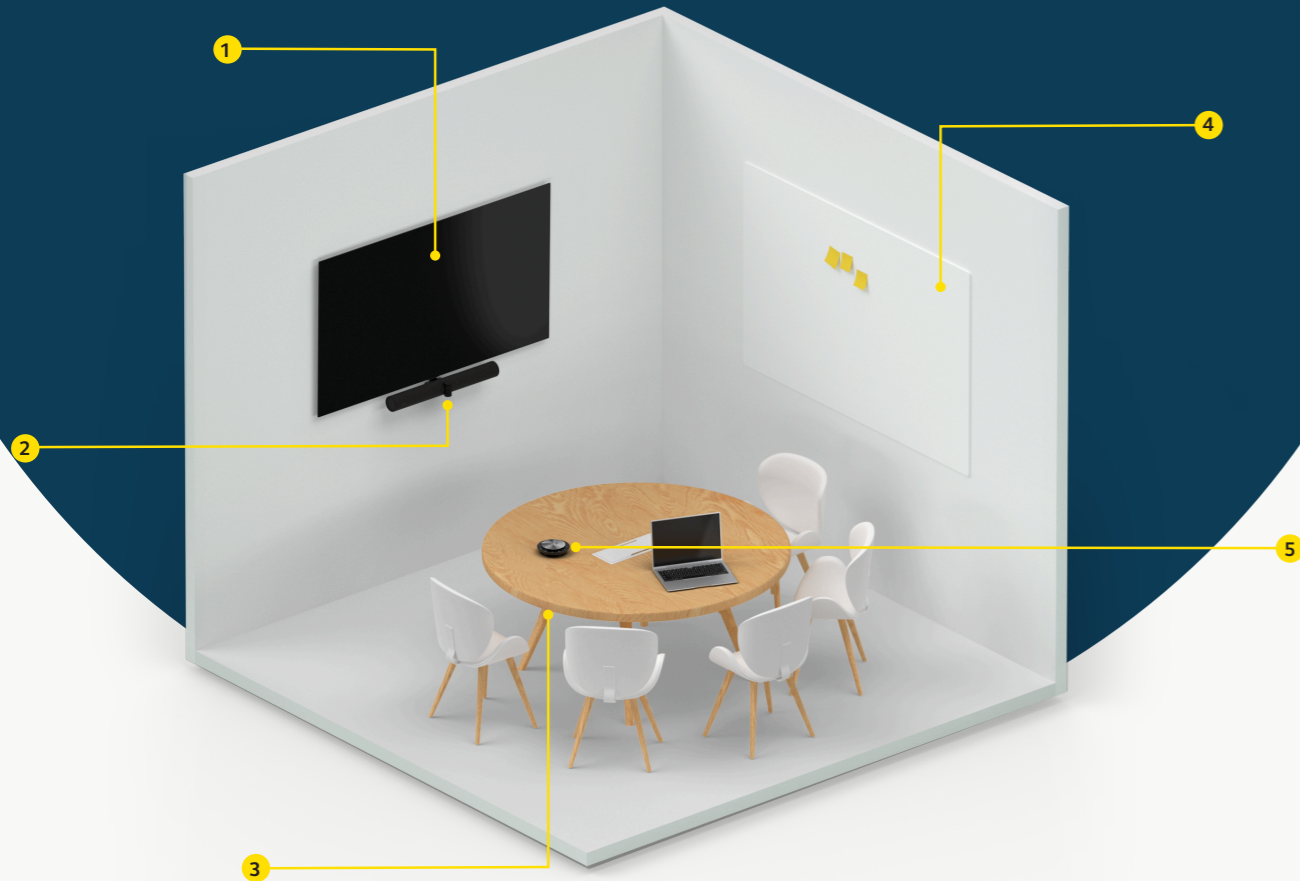


## OPTIMIZED EQUIPMENT PLACEMENT IN A SMALL MEETING ROOM

- One wall-mounted screen: **Recommended screen size: 140cm / 55"**
- 1**
- For optimal viewing of screen(s), recommended placement of first seat is **minimum 60cm / 23"** away
  - Screen placement from the floor when placed underneath the screens: **100cm / 39"**
- 
- Video bar placement from floor underneath the screens: **height 100cm / 39"**
- 2**
- Central underneath screen(s)
  - **8cm / 3.2"** from top of wall mount to bottom of screen
- 
- 3** **Hub** (BYOD scenario) placed underneath the table to help organize and hide cables
- 
- 4\*** Wall-mounted whiteboard: **recommended size\*\* 1.5 - 2.7 meters in width (5 - 9 feet)**
- 
- 5** **Optional remote control unit**

\* It is recommended that the whiteboard should be positioned within 3.6 meters (12 feet) of the Jabra PanaCast 50, and no closer than 1.5 meters (5 feet). The optimal viewing range is 3 meters (9 feet). It is important to note the Jabra PanaCast 50 camera consists of three separate lenses, arranged horizontally. The whiteboard must be positioned entirely within the view of one of these three lenses. It is recommended to use a standard whiteboard, rather than glass or highly reflective surface. For the best clarity, use black or dark markers to write on the whiteboard.  
 \*\* The recommended size of the whiteboard should be between 1.5-2.7 meters in width (5-9 feet), however whiteboards measuring between 1-3 meters in width (3-10 feet) are supported.

# The setup for your **huddle room**



## OPTIMIZED EQUIPMENT PLACEMENT IN A HUDDLE ROOM

- 1 One wall-mounted screen: **recommended screen size: 140cm / 55"**
  - For optimal viewing of screen, recommended placement of first seat is **minimum 60cm / 23" away**
  - Screen placement from the floor when placed underneath the screens: **height 100cm / 39"**
- 2 Video bar placement from floor underneath the screens: **height 100cm / 39"**
  - Central underneath screen
  - **8cm / 3.2"** from top of wall mount to bottom of screen
- 3 **Hub** (BYOD scenario) placed underneath the table to help organize and hide cables
- 4\* Wall-mounted whiteboard: **recommended size\*\* 1.5 - 2.7 meters in width (5 - 9 feet)**
- 5 **Optional remote control unit**

\* It is recommended that the whiteboard should be positioned within 3.6 meters (12 feet) of the Jabra PanaCast 50, and no closer than 1.5 meters (5 feet). The optimal viewing range is 3 meters (9 feet). It is important to note the Jabra PanaCast 50 camera consists of three separate lenses, arranged horizontally. The whiteboard must be positioned entirely within the view of one of these three lenses. It is recommended to use a standard whiteboard, rather than glass or highly reflective surface. For the best clarity, use black or dark markers to write on the whiteboard.  
 \*\* The recommended size of the whiteboard should be between 1.5 - 2.7 meters in width (5 - 9 feet), however whiteboards measuring between 1 - 3 meters in width (3 - 10 feet) are supported.

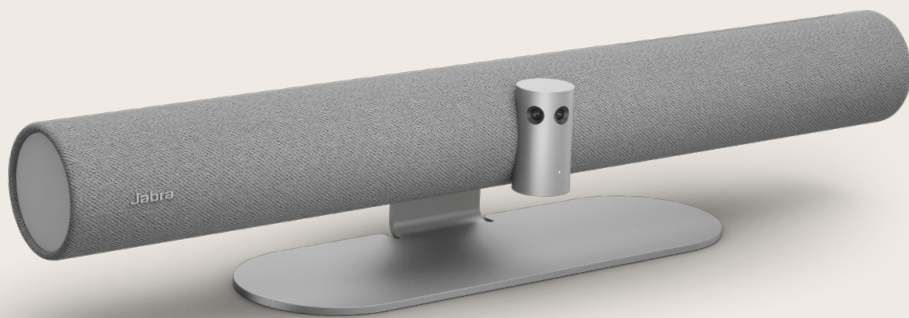
# The setup for your **focus room**



## OPTIMIZED EQUIPMENT PLACEMENT IN A FOCUS ROOM

- 1 One wall-mounted screen: **recommended screen size: 55"**
  - For optimal viewing of screen, recommended placement of first seat is **minimum 60cm / 23" away**
  - Screen placement from the floor when placed underneath the screens: **height 100cm / 39"**
- 2 Video bar placement from floor underneath the screens: **height 100cm / 39"**
  - Central underneath screen
- 3 **Hub** (BYOD scenario) placed underneath the table to help organize and hide cables
- 4\* Wall-mounted whiteboard: **recommended size\*\* 1.5 - 2.7 meters in width (5 - 9 feet)**

\* It is recommended that the whiteboard should be positioned within 3.6 meters (12 feet) of the Jabra PanaCast 50, and no closer than 1.5 meters (5 feet). The optimal viewing range is 3 meters (9 feet). It is important to note the Jabra PanaCast 50 camera consists of three separate lenses, arranged horizontally. The whiteboard must be positioned entirely within the view of one of these three lenses. It is recommended to use a standard whiteboard, rather than glass or highly reflective surface. For the best clarity, use black or dark markers to write on the whiteboard.  
 \*\* The recommended size of the whiteboard should be between 1.5 - 2.7 meters in width (5 - 9 feet), however whiteboards measuring between 1 - 3 meters in width (3 - 10 feet) are supported.



The intelligent video bar that gives **everyone**  
a natural meeting experience

---

[jabra.com/PanaCast](https://jabra.com/PanaCast)