

# Jabra Solemate Max

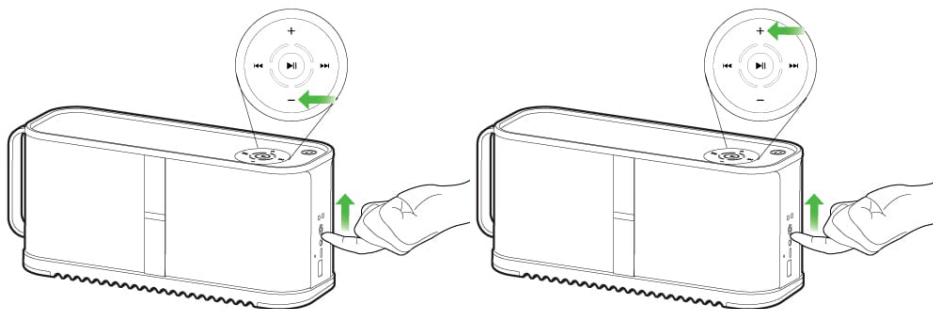
## How do I manually turn off/on voice guidance on my Jabra Solemate Max?

Voice guidance is turned on as the default setting, on your Jabra Solemate Max.

To manually turn off/on voice guidance, follow these steps.

### Turn off voice guidance

1. Turn off your Jabra Solemate Max.
2. Turn on your Jabra Solemate Max, and simultaneously press and hold the **Volume -** button. When you hear the announcement “sound prompts off”, release the **Volume -** button. This indicates that voice guidance has been turned off.



### Turn on voice guidance

1. Turn off your Jabra Solemate Max.
2. Turn on your Jabra Solemate Max, and simultaneously press and hold the **Volume +** button. When you hear the announcement “sound prompts on”, release the **Volume +** button. This indicates that voice guidance has been turned on.

