

Jabra Evolve 80 UC Stereo

How do I set up and use Intelligent Call Transfer using Jabra Direct?

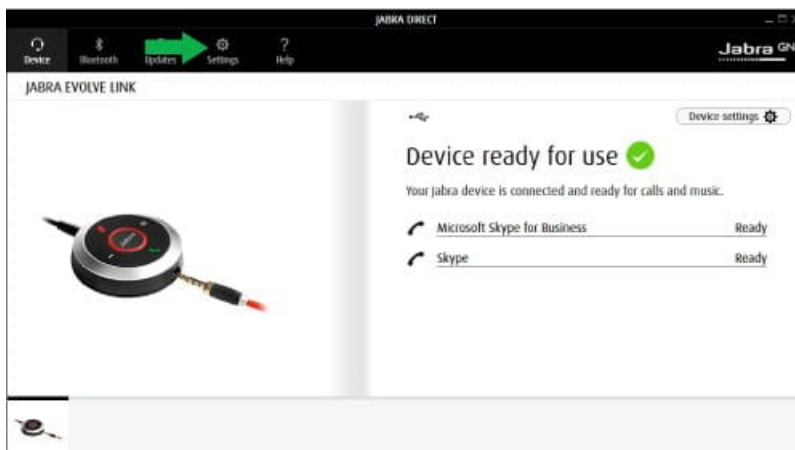
Prerequisites

- Jabra Evolve 40 with firmware version 2.2.0 or later
- Jabra Evolve 80 with firmware version 2.2.0 or later
- [Jabra Direct version 3.x or earlier](#)

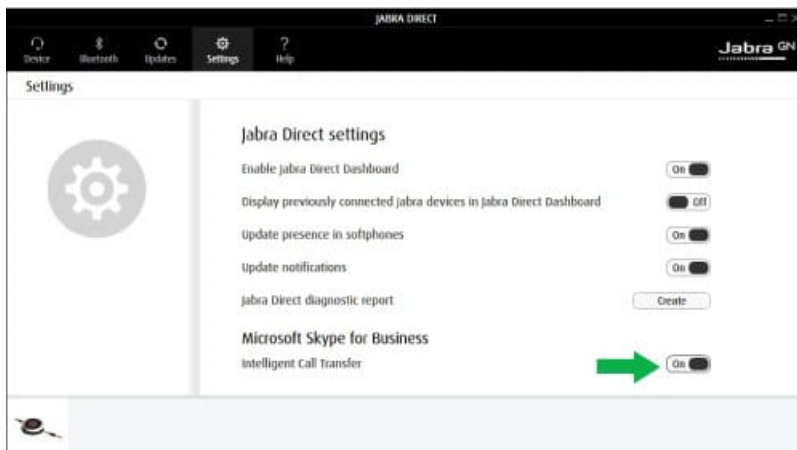
Intelligent Call Transfer lets you transfer an incoming call on Microsoft Skype for Business to a smartphone. This procedure applies even if you are already in a call or a meeting.

To set up Intelligent Call Transfer, follow these steps.

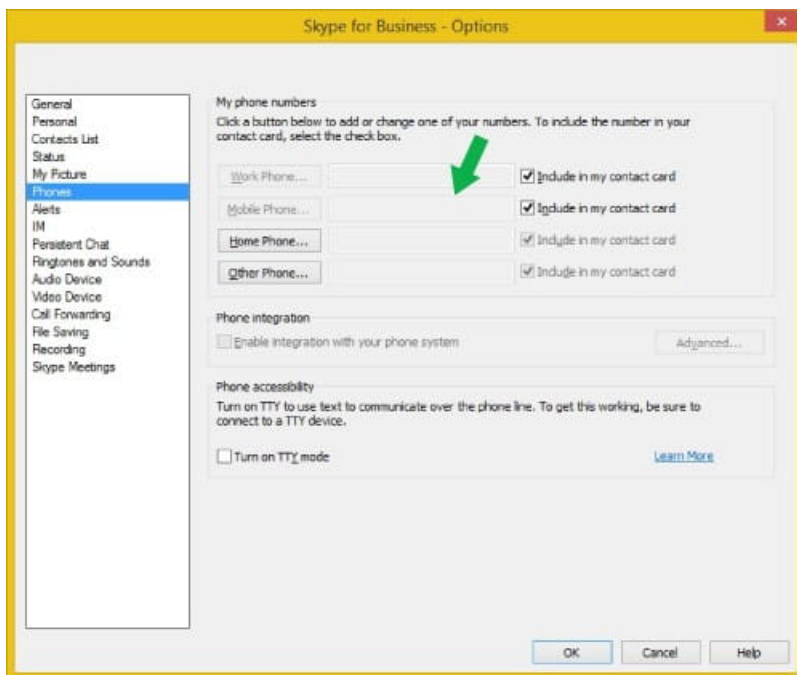
1. In Jabra Direct, click **Settings**.



2. In **Intelligent Call Transfer**, select **On**.



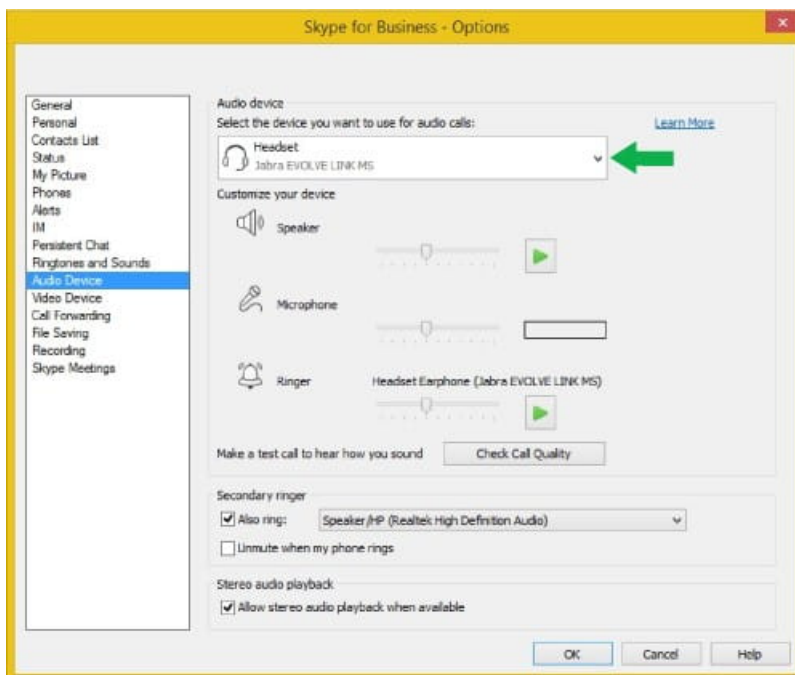
3. Open **Microsoft Skype for Business**.
4. Click **Tools, Options**.
5. Click **Phones**.
6. Select the **Other Phone** button.



7. Enter a valid phone number. Check with your IT department or supplier whether a prefix should be used.

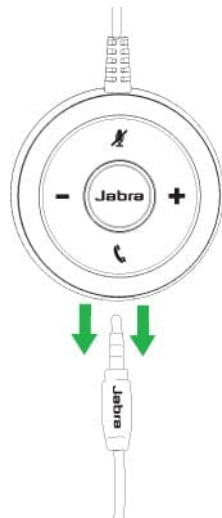


8. Click **OK**.
9. Click **Audio Device**.
10. Make sure that your Jabra headset is selected as the default audio device.



To use Intelligent Call Transfer, follow these steps.

1. When an incoming call arrives, unplug the audio jack from the call control unit.



2. Connect the audio jack to your mobile phone.
3. Answer the incoming call to complete the transfer.

Note

Images and text are for guidance purposes only. Actual images and text may vary depending on the connected device and updates to the software.

Applicable products



Jabra Evolve 40 MS
Mono USB-C



Jabra Evolve 40 MS
Mono



Jabra Evolve 40 MS
Stereo USB-C



Jabra Evolve 40 UC
Mono



Jabra Evolve 40 MS
Stereo



Jabra Evolve 40 UC
Mono USB-C



Jabra Evolve 40 UC
Stereo



Jabra Evolve 40 UC
Stereo USB-C



Jabra Evolve 80 MS
Stereo



Jabra Evolve 80 MS
Stereo USB-C



Jabra Evolve 80 UC
Stereo



Jabra Evolve 80 UC
Stereo USB-C