

# Jabra PanaCast 50 Room System MS

## How do I edit and save Pan, Tilt, Zoom presets on the Jabra PanaCast 50?

### Prerequisites

- [Jabra Direct - latest version](#)
- Jabra PanaCast 50 remote control

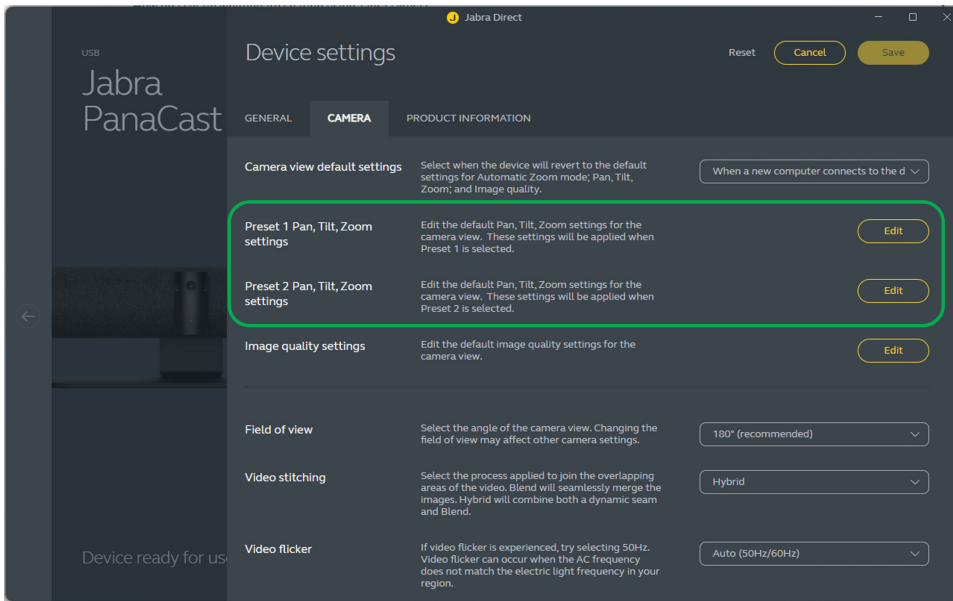
If you have adjusted the camera view, you can save the Pan, Tilt, Zoom (PTZ) settings as a preset – Preset 1 or Preset 2. The preset is then available for use in future meetings. Saved presets do not overwrite the default Pan, Tilt, Zoom settings and must be selected when a new meeting starts.

There are several ways to edit and save a preset.

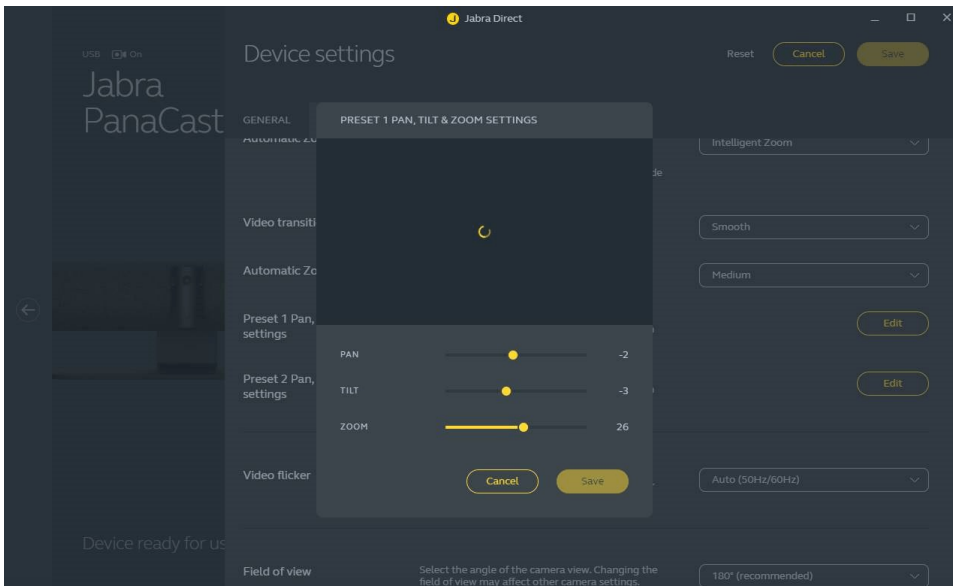
- Use the Jabra Direct camera settings.
- Use the Jabra Direct camera controller.
- Use the remote control.

### Jabra Direct camera settings

1. Go to Jabra Direct > Jabra PanaCast 50 > Settings > Camera > Preset 1 Pan, Tilt, Zoom settings/Preset 2 Pan, Tilt, Zoom settings.

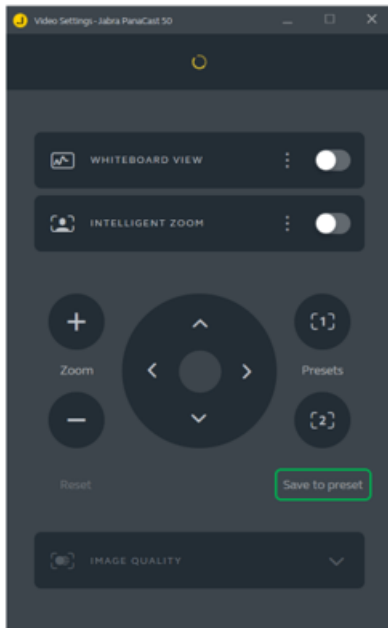


2. Click **Edit** to open the settings.
3. Adjust the camera view using the Pan, Tilt, Zoom controls, and then click **Save**.

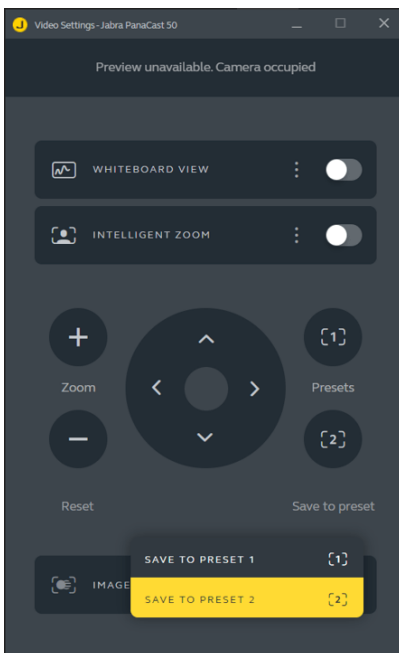


### Jabra Direct camera controller

1. Go to Jabra Direct > Jabra PanaCast 50 > Camera controller.
2. Adjust the camera view using the Pan, Tilt, Zoom controls.
3. Click **Save to preset**.

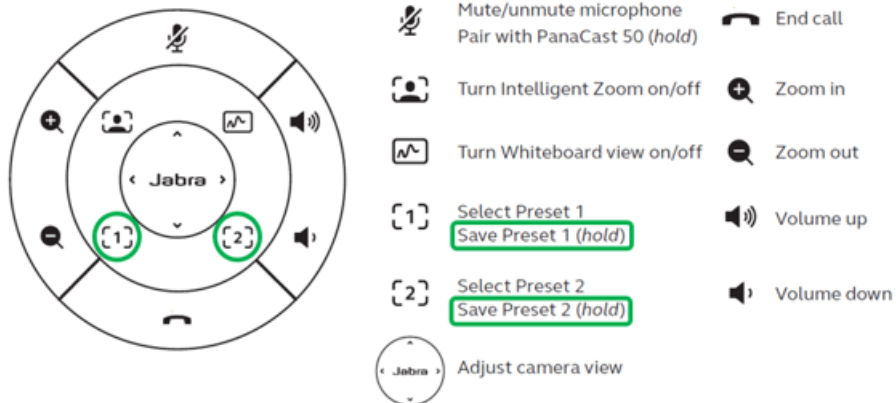


4. In the pop-up, select **Save to Preset 1/Save to Preset 2**.



## Remote control

1. Adjust the camera view using the Pan, Tilt, Zoom controls.
2. Press and hold **Preset 1/Preset 2** to save the settings to the preset.



**Note**

When you edit and save Pan, Tilt, Zoom presets, the Automatic Zoom mode (Intelligent Zoom or Virtual Director) is turned off.

We recommend you do not change settings during an active video conference call.