

Jabra Suite for Mac

How do I pair my Jabra headset with my Jabra Link 360 when using Jabra Suite for Mac?

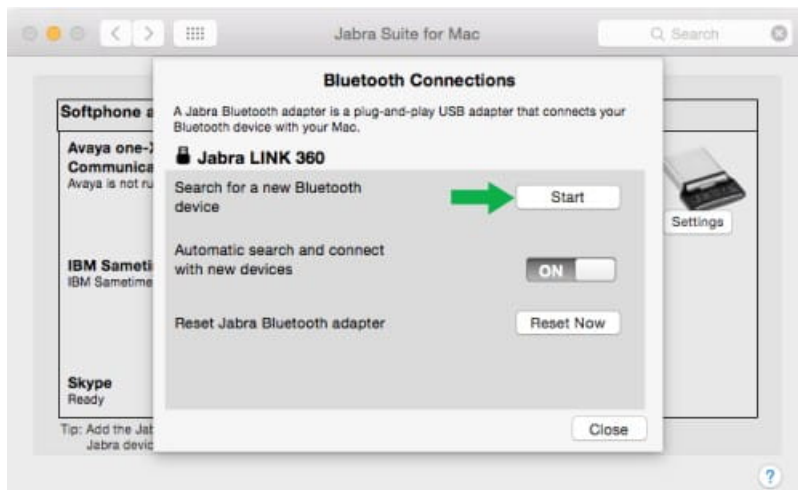
- Version 2.5 or later

To pair your Jabra headset to your Jabra Link 360, follow these steps:

1. Ensure the Jabra Link 360 is plugged into the Mac.
2. Open Jabra Suite for Mac.
3. Click **Settings**.



4. Click **Start** to search for a new Jabra headset.



5. Wait until a connection is established.



6. When the connection is established, you will see the connected device in **Bluetooth Connections** and in the **overview**.

