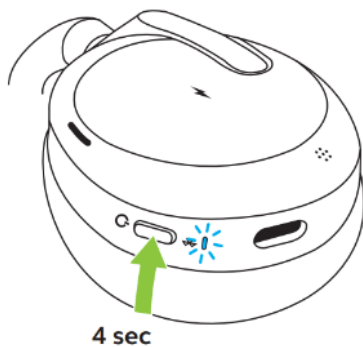


## How do I pair my Jabra Evolve2 65 Flex with my mobile device?

To pair your Jabra Evolve2 65 Flex with your smartphone, tablet, or other handheld mobile device, follow these steps.

1. Turn on the Bluetooth setting on your mobile device.
2. To enter pairing mode, press and hold (4 seconds) the **Power** button on the left earcup until the LED flashes blue. If you are wearing the headset, you will hear the pairing instructions.



3. To pair, go to the Bluetooth menu on your mobile device and select the Jabra Evolve2 65 Flex from the list of available devices. If you are asked for a pin code, enter "0000" (four zeros).

### Note

If pairing is not successful, try the pairing steps again, or try pairing with a different Bluetooth device. For troubleshooting tips, see [here](#).

Optionally, try using the [Bluetooth Pairing Guide](#) which provides detailed steps for pairing with your mobile device.