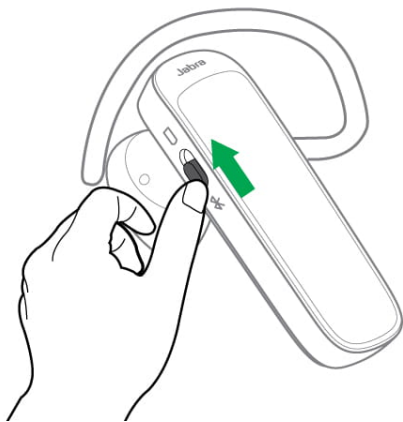


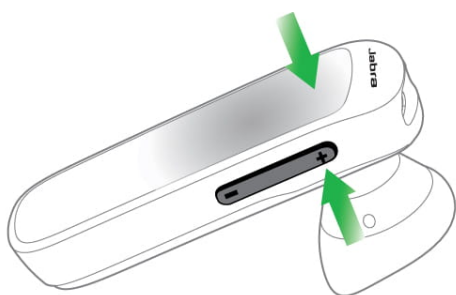
How do I reset my Jabra Mini?

When you reset your Jabra Mini, the list of devices that have been paired with it is cleared. Follow these steps to reset:

1. Turn on your Jabra Mini by setting the **On/off** switch to the “on” position.



2. Simultaneously press and hold (6 seconds) the **Answer/end** button and the **Volume +** button, and then release the buttons.



3. Your Jabra Mini is now reset, and it will shut down. Turn off your Jabra Mini.

Note: When your Jabra Mini has been reset, you will need to re-pair with your mobile phone. Remember to delete the previous pairing before you re-pair.

