

Jabra Engage 75 Convertible

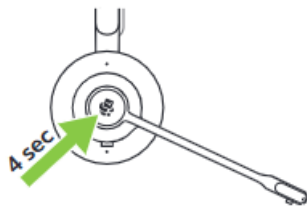
How do I manually pair a Jabra Engage headset with the Jabra Link 400?

If the Engage headset was purchased in a bundle with the Link 400 DECT adapter, they come already pre-paired.

To manually pair an Engage headset with the Link 400, use either wireless pairing or cabled pairing. If there are other headsets in the area, and there is a risk of accidentally pairing with another headset, we recommend using cabled pairing.

Wireless pairing

1. Plug the Link 400 into a USB port on the computer.
2. Turn off the headset (press and hold the **Call** button until the LED flashes red and the headset turns off).
3. Press and hold the **Call** button on the headset until the LED flashes blue.



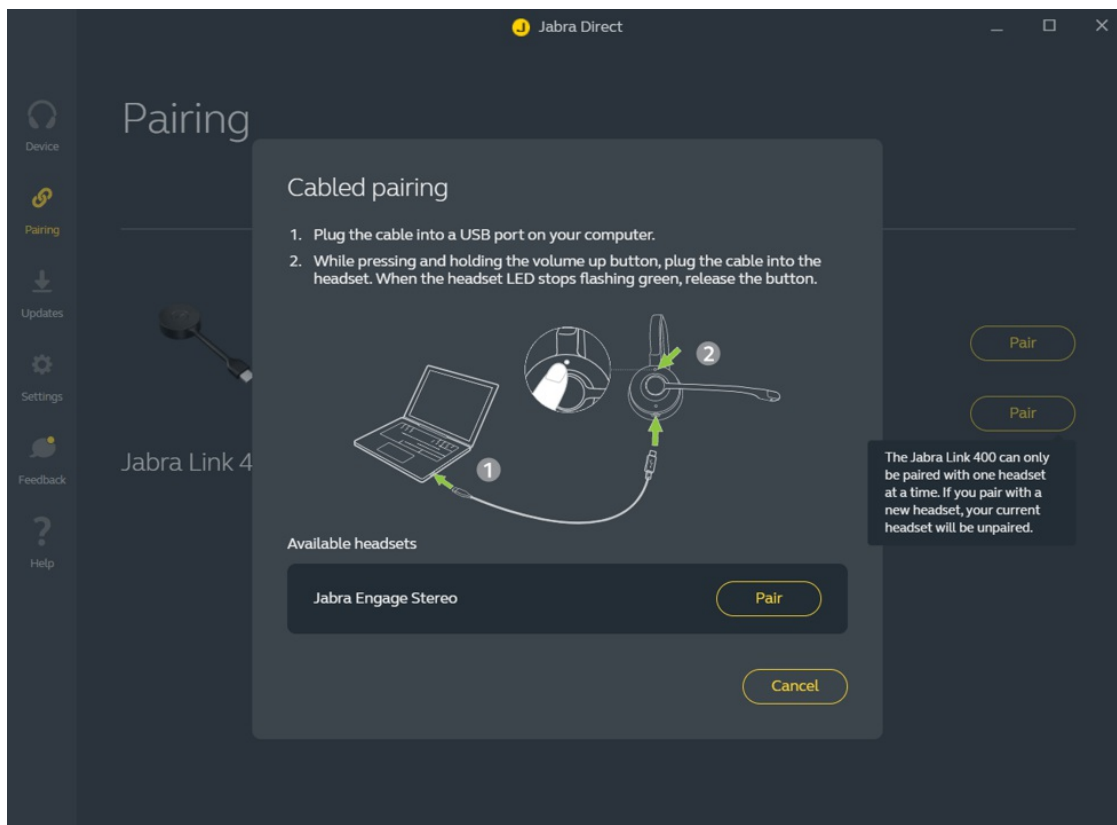
4. Press and hold (1-2 seconds) the button on the Link 400 to pair it with the headset.



Cabled pairing

This process is done using Jabra Direct.

1. Plug the Link 400 into a USB port on the computer.
2. Go to Jabra Direct > Pairing > Cabled pairing, and click **Pair**.
3. Follow the onscreen instructions.
4. When your headset appears under **Available headsets**, click **Pair**.



5. When pairing is complete, click **OK** and disconnect the cable.

Applicable products



Jabra Engage 55 -
USB-A MS Mono



Jabra Engage 55 -
USB-A MS Stereo



Jabra Engage 55 -
USB-A MS



Jabra Engage 55 -
USB-A MS Mono with



Jabra Engage 55 -
USB-A MS Stereo



Jabra Engage 55 -
USB-A UC



Jabra Engage 65
Stereo



Jabra Engage 75
Mono



Jabra Engage 75
Convertible



Jabra Engage 75
Stereo



Jabra Engage 55 -
USB-A UC Mono



Jabra Engage 55 -
USB-A UC Mono with



Jabra Engage 55 -
USB-A UC Stereo



Jabra Engage 55 -
USB-A UC Stereo with



Jabra Engage 55 -
USB-C MS Mono



Jabra Engage 55 -
USB-C MS



Jabra Engage 55 -
USB-C MS Mono with



Jabra Engage 55 -
USB-C MS Stereo with



Jabra Engage 55 -
USB-C MS Stereo



Jabra Engage 55 -
USB-C UC Convertible



Jabra Engage 55 -
USB-C UC Mono



Jabra Engage 55 -
USB-C UC Mono with



Jabra Engage 55 -
USB-C UC Stereo with



Jabra Engage 65
Convertible



Jabra Engage 55 -
USB-C UC Stereo



Jabra Engage 65
Mono



Jabra Link 400a USB-
A, DECT, MS,



Jabra Link 400c USB-
C, DECT, UC,



Jabra Link 400c USB-
C, DECT, MS,



Jabra Link 400a USB-
A, DECT, UC,



Jabra Engage 75 SE -
Stereo



Jabra Engage 75 SE -
Convertible



Jabra Engage 75 SE - Mono



Jabra Engage 65 SE - Convertible



Jabra Engage 55 SE - USB-A MS Mono



Jabra Engage 55 SE - USB-A MS



Jabra Engage 65 SE - Mono



Jabra Engage 65 SE - Mono (Low Power)



Jabra Engage 65 SE - Stereo



Jabra Engage 65 SE - Stereo (Low Power)



Jabra Engage 55 SE - USB-A MS Stereo



Jabra Engage 55 SE - USB-A MS Mono



Jabra Engage 55 SE - USB-A MS Stereo



Jabra Engage 55 SE - USB-A UC Mono



Jabra Engage 55 SE - USB-A UC



Jabra Engage 55 SE - USB-A UC Stereo



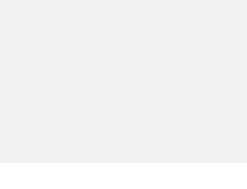
Jabra Engage 55 SE - USB-A UC Stereo



Jabra Engage 55 SE - USB-A UC Mono



Jabra Engage 55 SE - USB-C MS



Jabra Engage 55 SE - USB-C MS Mono



Jabra Engage 55 SE - USB-C MS Mono



Jabra Engage 55 SE - USB-C MS Stereo





**Jabra Engage 55 SE -
USB-C MS Stereo**



**Jabra Engage 55 SE -
USB-C UC Convertible**



**Jabra Engage 55 SE -
USB-C UC Mono**



**Jabra Engage 55 SE -
USB-C UC Stereo**



**Jabra Engage 55 SE -
USB-C UC Mono**



**Jabra Engage 55 SE -
USB-C UC Stereo**