

# Jabra Rox Wireless

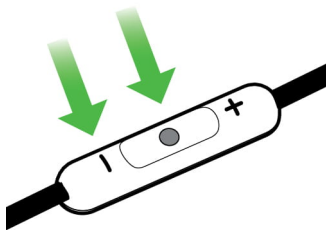
## How do I manually turn off/on voice guidance on my Jabra Rox Wireless/Sport Rox Wireless?

Voice guidance is turned on, as the default setting, on your Jabra Rox Wireless/Sport Rox Wireless.

To manually turn off/on voice guidance, follow these steps.

### Turn off voice guidance

1. Simultaneously press and hold (2 seconds) the **Multi-function** button and the **Volume -** button.
2. Release the buttons when you hear “voice prompts off” announced in the headset.



### Turn on voice guidance

1. Simultaneously press and hold (2 seconds) the **Multi-function** button and the **Volume +** button.
2. Release the buttons when you hear “voice prompts on” announced in the headset.

