

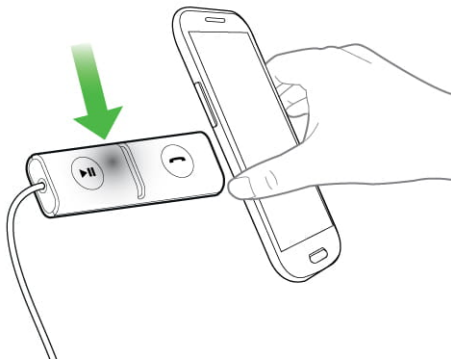
Jabra Streamer

How do I pair my Jabra Streamer with my mobile device using NFC?

To pair your Jabra Streamer with your smartphone, tablet, or other mobile device using NFC, follow these steps.

1. Turn on NFC on your mobile device.
2. Connect the Jabra Streamer to a power source to turn it on.
3. To pair, locate the NFC zone on your mobile device and place it against the NFC zone on your Jabra Streamer.

Enter “0000” (four zeros) if you are asked for a pin code. Your mobile device may prompt you to accept the pairing.



Note

If pairing is not successful, try the pairing steps again, or try pairing with a different Bluetooth device. For troubleshooting tips, [see here](#).

Optionally, try using the [Bluetooth Pairing Guide](#) which provides detailed steps for pairing with a mobile device.