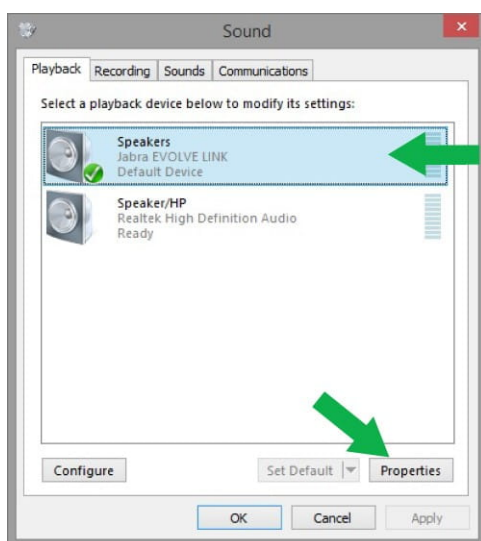


## Jabra Biz 1500 Mono QD

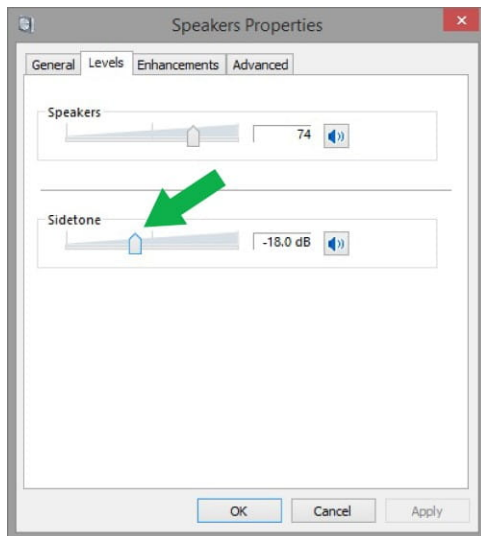
**When I speak into the microphone I cannot hear my voice or I hear too much of my voice. How do I adjust the sidetone level in the Windows settings?**

To adjust the sidetone setting of your headset, follow these steps:

1. Open the Windows **Control Panel**.
2. Click **Sound**.
3. On the **Playback** tab, select the headset to adjust, and then click **Properties**.



4. Click the **Levels** tab.
5. Adjust the level of the sidetone.  
If you cannot hear your own voice, increase the level of sidetone. If you hear too much of your voice, decrease the level of sidetone.
6. Click **OK**.



**Note:**

For the Jabra Evolve 40/80, the headset must be connected to the USB port of the computer using the supplied controller (for example the Jabra Evolve Link). You cannot adjust the sidetone if the jack is plugged directly in the computer.