

Jabra Elite Sport (Upgrade)

How do I check the fit of my Jabra Elite Sport?

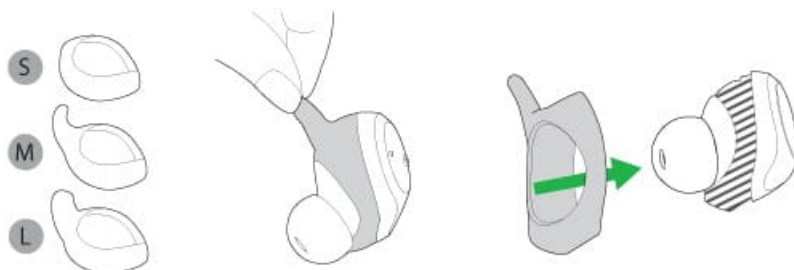
Test the fit of the earbuds

To check the fit of your Jabra Elite Sport earbuds, start a workout and jog in place (150 to 160 steps per minute) for approximately 30 seconds. If the heart rate monitor shows your pulse increasing steadily, the fit is correct. If your pulse remains in the 80 to 100 BPM (beats per minute) range, or if it jumps very high, the fit of the earbuds may be incorrect due to the following reasons: the positioning of the sensor, the choice of EarWing, or the size of EarGel. To adjust the fit, use the following guidelines:

Select the correct EarWing

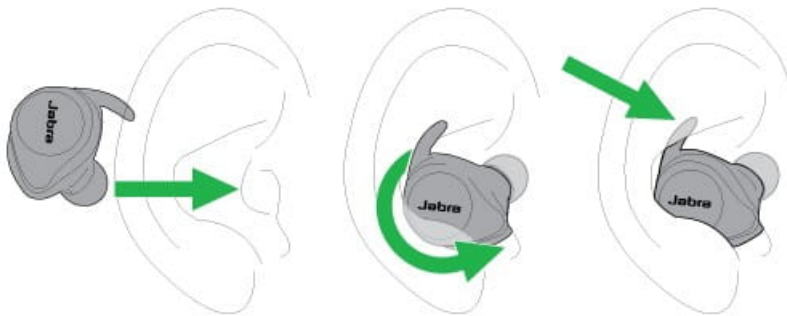
For the most secure fit during your workout, and for accurate heart rate monitoring, try each of the different EarWing styles. We recommend that you try the small EarWing which is already on the earbud, with all the EarGel sizes. If necessary, you can try the medium or large EarWing.

To change the EarWing, gently pull it off the earbud. Pull on the new EarWing, and ensure that the ridge on the inner lining is aligned with the tab on the earbud. This will secure the EarWing to the earbud and prevent it from falling out during a workout.



Position the EarWing

The top of the EarWing should fit tightly into the ridge of the ear.



Select the correct EarGel size

For the optimal audio experience, try each of the different sizes and types (silicon and foam) of EarGel. The fit should feel tight and secure in your ear.

