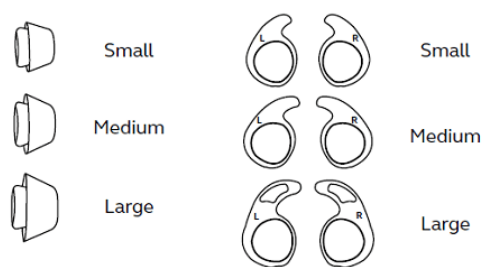


## Jabra Evolve 75e MS

### How do I get the best fit with my Jabra wireless earbuds?

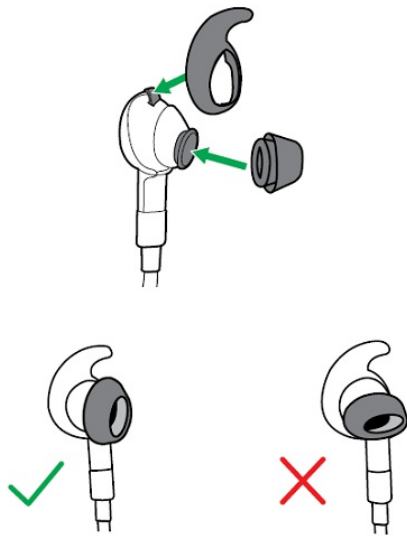
Your Jabra wireless earbuds are designed to be worn around the neck.

To get the best fit the earbuds are supplied with three sizes of EarGels and EarWings: small, medium, and large.



We recommend that you mix and match the different EarGel and EarWing sizes to find the best combination for your ears. The best fit will feel tight and will seal out background noises.

To properly attach the EarWing, align the indentation on the EarWing with the ridge on the earbud (as illustrated), and stretch the EarWing over the earbud. It will fit perfectly in the groove when it is properly attached.



## Applicable products



Jabra Elite 65e



Jabra Elite 65e -  
Copper Black



Jabra Evolve 65e MS



Jabra Evolve 65e UC



Jabra Evolve 75e MS



Jabra Evolve 75e UC