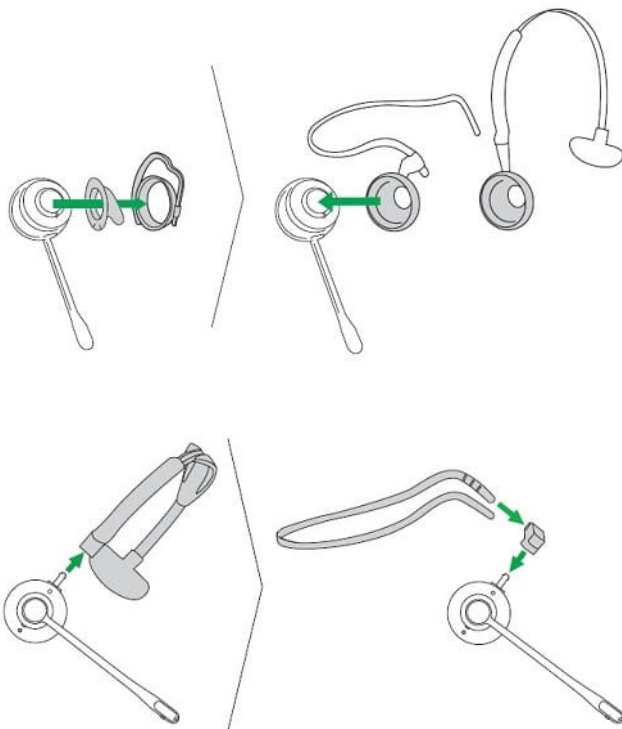


# Jabra Engage 75 Convertible

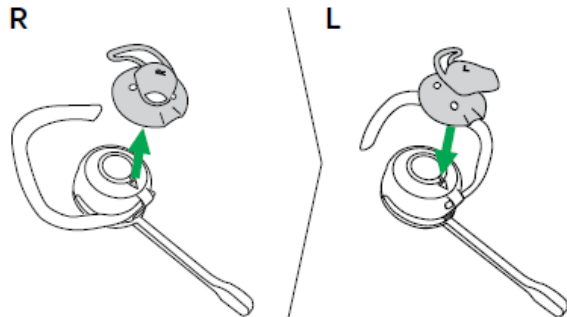
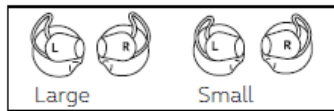
## How do I change the wearing style on my Jabra Engage 75 convertible headset?

Select your preferred wearing style and follow the illustrated guidance. You can wear the headset on the left or the right ear.

### Headband or neckband

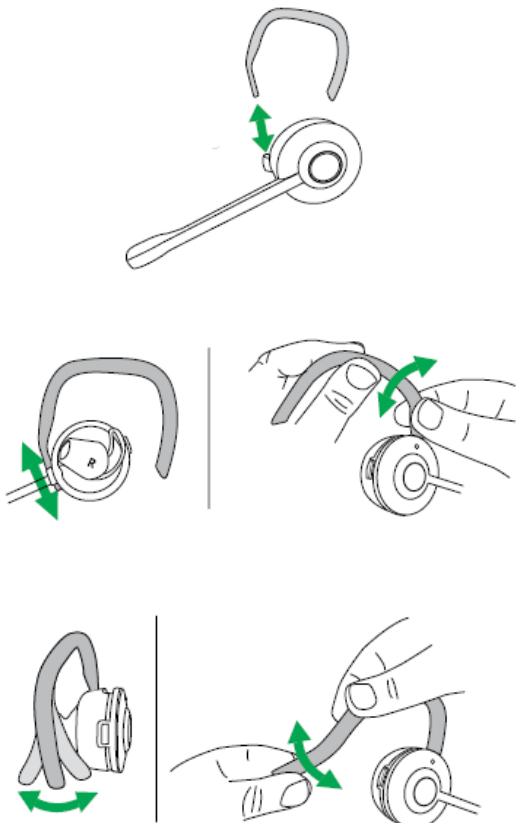


### Change the EarGel



## Change the EarHook

The EarHooks are flexible and can be bent to suit your ear for a secure and comfortable fit.



## Applicable products



**Jabra Engage 75  
Convertible**



**Jabra Engage 65  
Convertible**



**Jabra Engage 45 SE -  
Convertible**



**Jabra Engage 65 SE -  
Convertible**



**Jabra Engage 75 SE -  
Convertible**