

Jabra Engage 75 Stereo

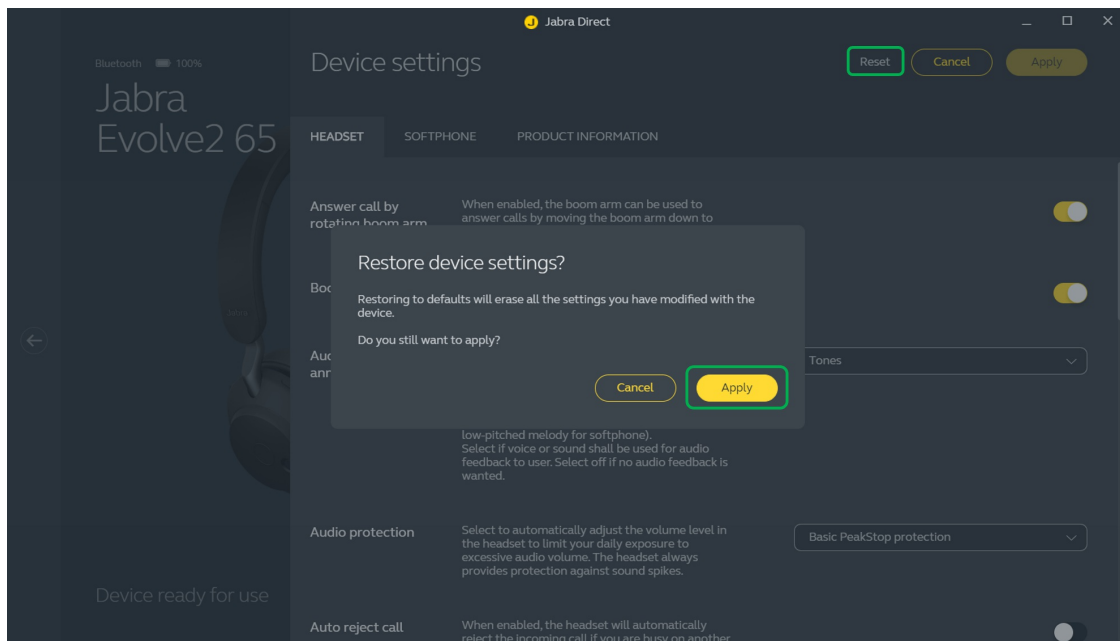
How do I reset my Jabra device to the default settings using Jabra Direct?

Prerequisites

- [Jabra Direct - latest version](#)

To reset your Jabra device, follow these steps.

1. In Jabra Direct, select your device.
2. Click **Device**.
3. In **Device settings**, click **Reset** to open the **Restore device settings** dialog.
4. Click **Apply**.



Note

When you have reset your Jabra device, you may need to re-pair it with any previously paired wireless devices, such as a mobile phone.

Images and text are for guidance purposes only. Actual images and text



may vary depending on the connected device and updates to the software.