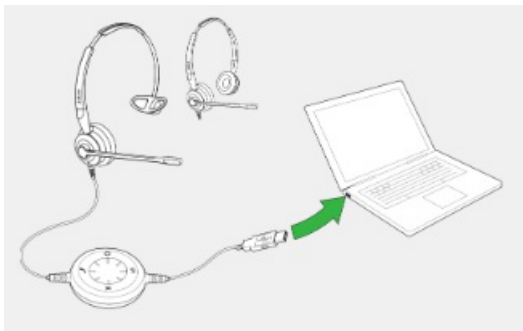


# Jabra Biz 2400 II QD Mono NC 3-in-1 Wideband Balanced

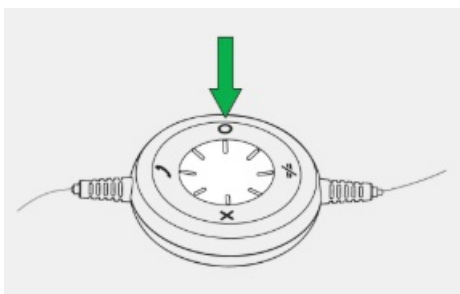
## How do I pair the Jabra Link 280 with my mobile device?

To pair the Jabra Link 280 with your smartphone, tablet, or other mobile device, follow these steps.

1. Start with your Jabra headset and the Jabra Link 280 connected to a computer and turned on. The Jabra Link 280 is powered by USB, so it turns on and off with the computer.



2. To enter pairing mode, press and hold (5 seconds) the **O** button on the Jabra Link 280 until the LEDs flash blue.



3. To pair, go to the Bluetooth menu on your mobile device and select your Jabra product from the list.  
Enter "0000" (four zeros) if you are asked for a pin code.

**Note**

If pairing is not successful, try the pairing steps again, or try pairing with a different Bluetooth device. For troubleshooting tips, [see here](#).

Optionally, try using the [Bluetooth Pairing Guide](#) which provides detailed steps for pairing with your mobile device.