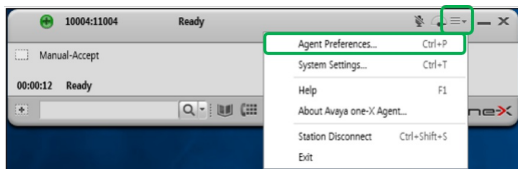


# Jabra Evolve 40 MS Mono USB-C

## How do I set up my Jabra device to work with Avaya One-X Agent?

To select your Jabra device for use with Avaya One-X Agent, follow these steps.

1. Click the **Drop-down** icon at the top right corner of the Avaya One-X Agent window and select **Agent Preferences**.



2. In **Agent Preferences**, select **Audio**.
3. In **Audio**, select your Jabra device under **Playback Device** and **Record Device**.

If you are using a Jabra device with a connected Link adapter, select the Link adapter.

