

## Jabra Direct

### How do I configure my CounterPath Bria softphone to support remote call control from my Jabra device?

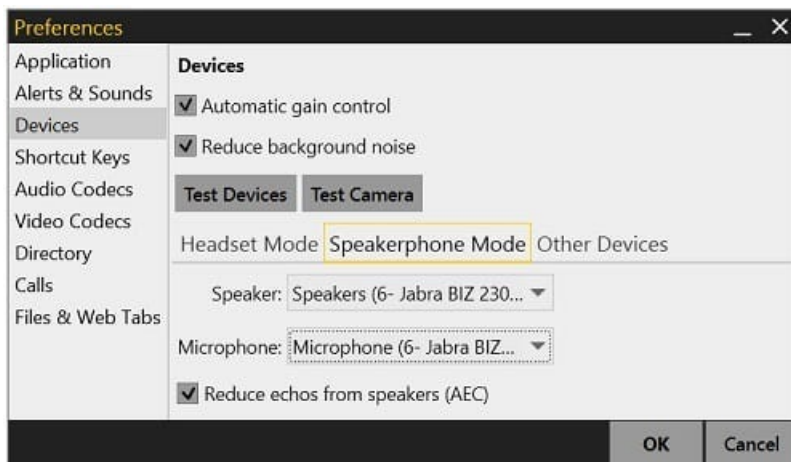
If you are using a CounterPath Bria softphone with Jabra Direct, there are additional setup steps to perform after you install the CounterPath Bria softphone.

For versions 4.2 and later, follow these steps:

1. Start CounterPath Bria and log in.
2. Go to **Preferences>Devices**. In **Headset Mode**, select your Jabra headset as the default audio device for the **Speaker** and **Microphone** and click **OK**.

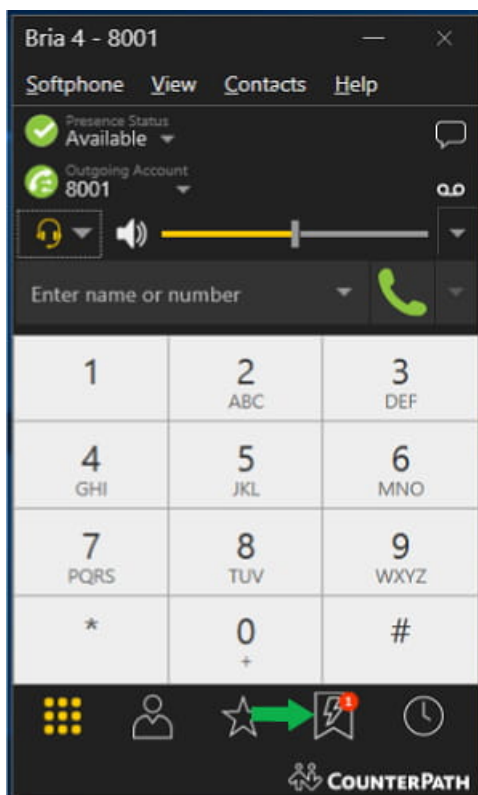


In **Speakerphone Mode**, select your Jabra headset as the default audio device for the **Speaker** and **Microphone** and click **OK**.

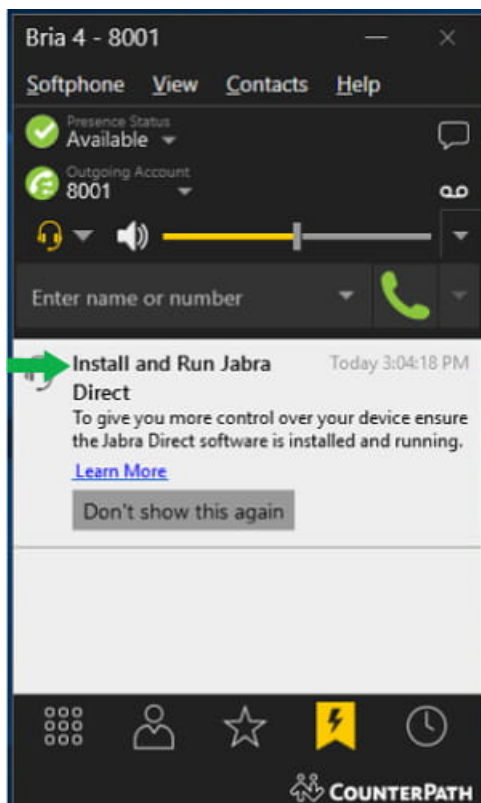


For CounterPath Bria versions 4.7 and later, follow these additional steps:

1. Click the notification icon in the bottom menu (marked with a green arrow in the following screenshot).



2. You are informed to install and run Jabra Direct.



- When you open Jabra Direct, click **Allow Access**. This setting gives Jabra Direct access to the Bria 4 Application API.

