

Jabra Direct

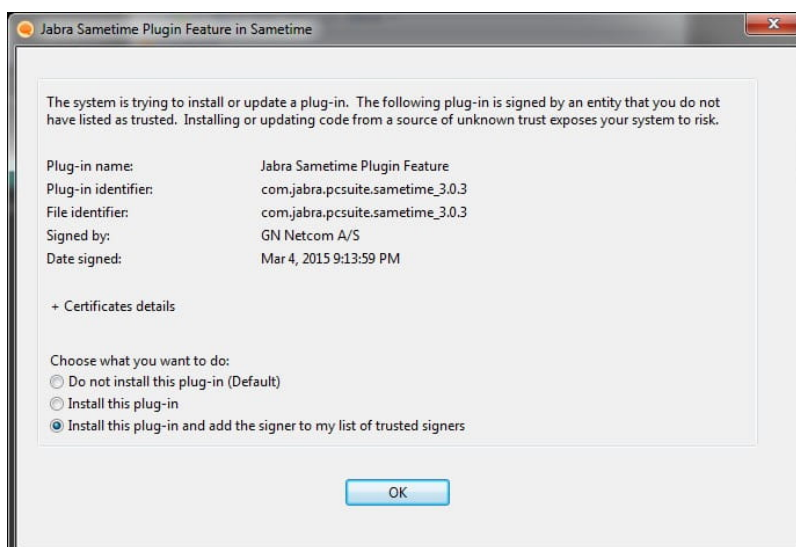
How do I configure my IBM Sametime softphone to support remote call control from my Jabra device?

If you are using an IBM Sametime softphone with Jabra Direct, you must install the Jabra Sametime plug-in to enable remote call control with a Jabra device. You can install the Jabra Sametime plug-in manually or automatically. However, automatic installation is only supported for: IBM Sametime version 8.5.2 IFR-1 and later; and IBM Sametime Embedded in Lotus Notes version 9.0 and later.

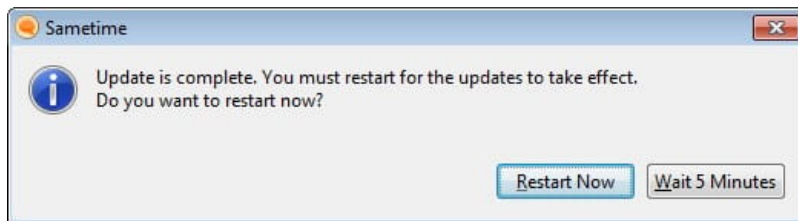
If you already have a previous version of the Jabra Sametime plug-in installed, you must first uninstall the old version. See the FAQ in this section for instructions on how to uninstall the plug-in.

For an automatic installation of the Jabra Sametime plug-in follow these steps:

1. Start IBM Sametime.
2. Start Jabra Direct, and an IBM Sametime dialog box is displayed as shown in the following screenshot.



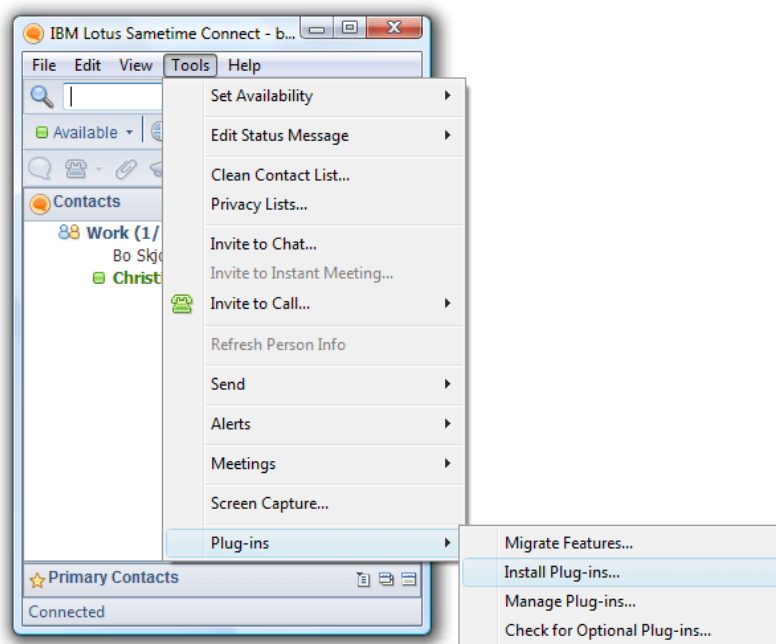
3. Select the **Install this plug-in and add the signer to my list of trusted signers** option, and then click **OK**.
4. An IBM Sametime dialog box is displayed as shown in the following screenshot. Click **Restart Now**.



5. Jabra Direct then displays the Jabra device, and the IBM Sametime is ready to use.

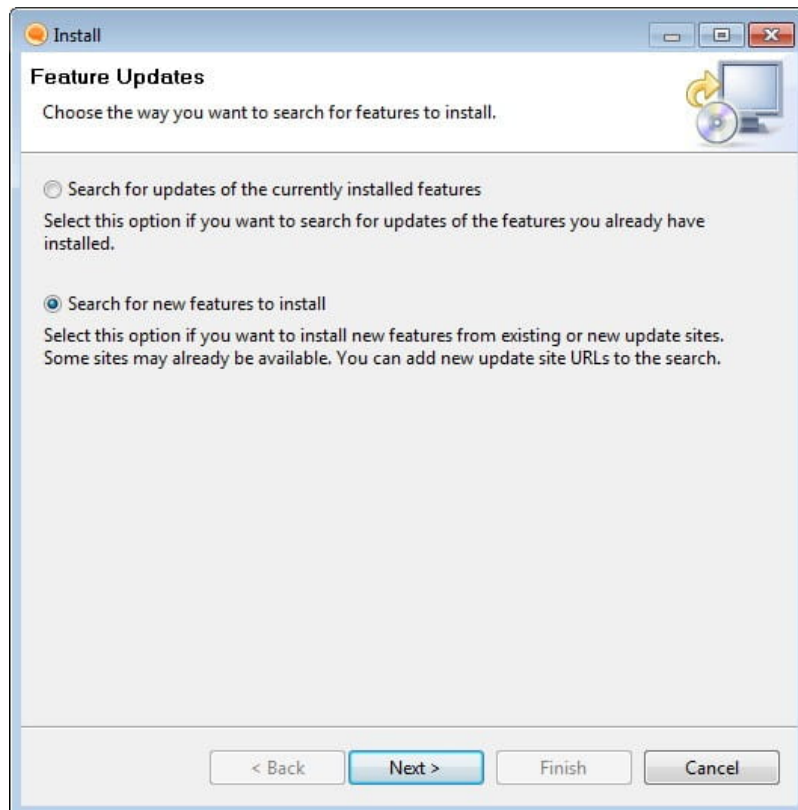
For a manual installation of the Jabra Sametime plug-in follow these steps:

1. Start IBM Sametime and log in.
2. Select **Tools, Plug-ins**, and then select **Install Plug-ins**.

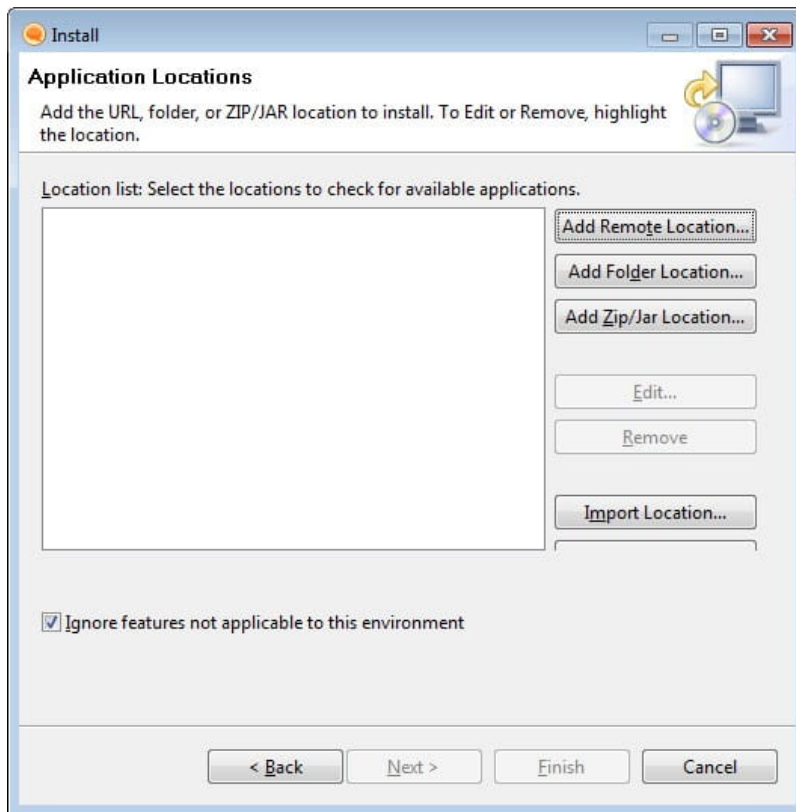


3. In the **Install/Update** wizard, select **Search for new features to**

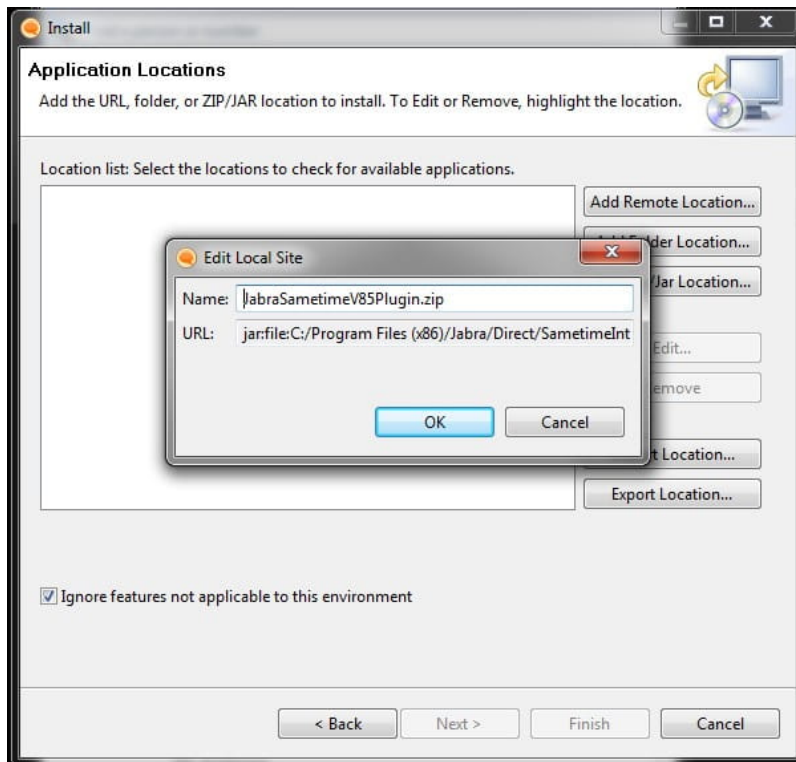
install, and then click **Next**.



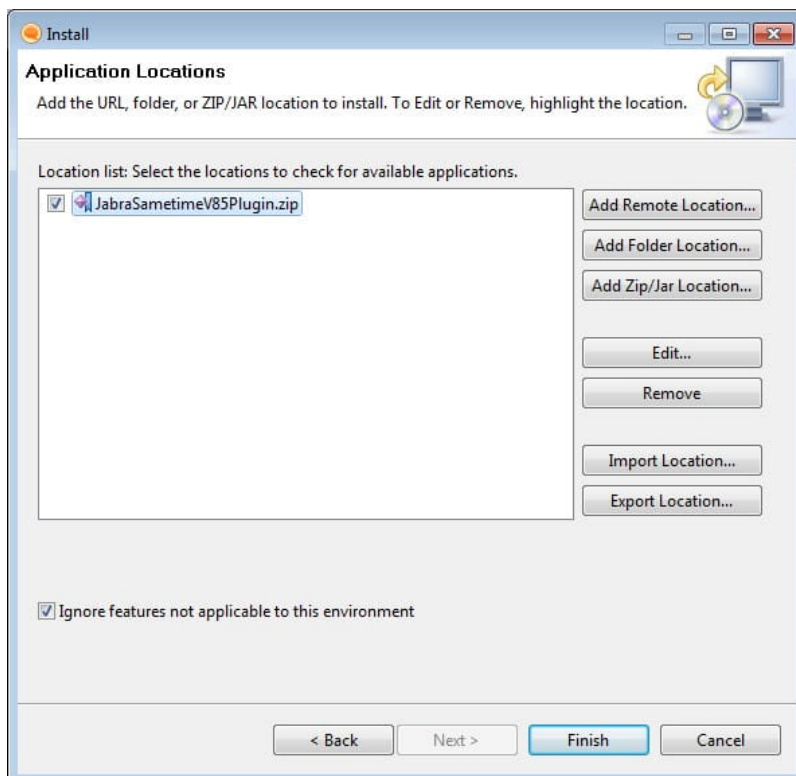
4. Click **Add Zip/Jar Location**.



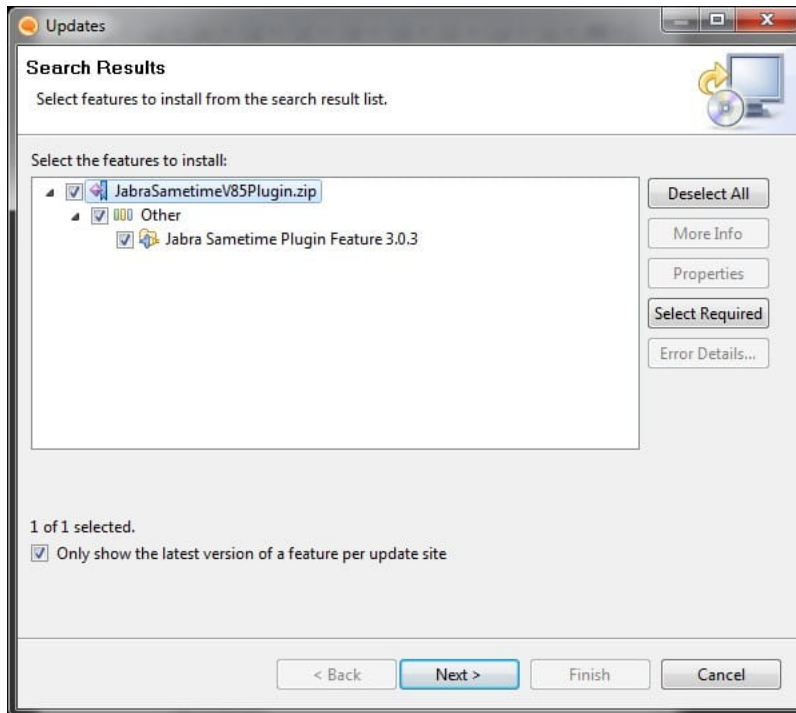
In the **Select Local Site Archive** dialog that opens, browse to the Jabra Direct installation folder path, C:\Program Files x86)\Jabra\Direct\SametimeIntegration\JabraSametimeV85Plugin, select the **Jabra plug-in** ZIP archive, and then click **OK**. In the **Edit Local Site** dialog box, click **OK** as shown in following screenshot.



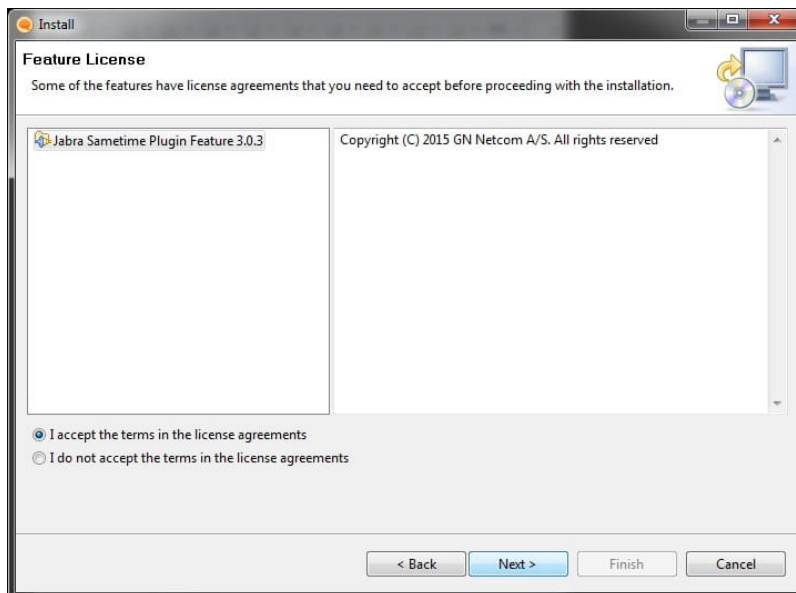
5. Select the **Jabra Sametime plug-in** zip file, and then click **Finish**.



6. The **Updates** wizard opens. On the **Search Results** page, select all check boxes, and then click **Next**.



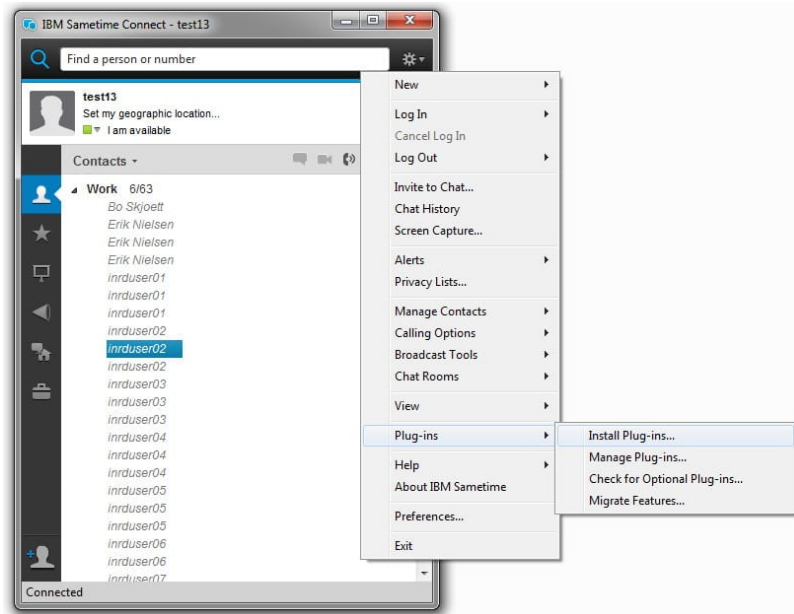
7. Accept the license agreement, and then click **Next**.



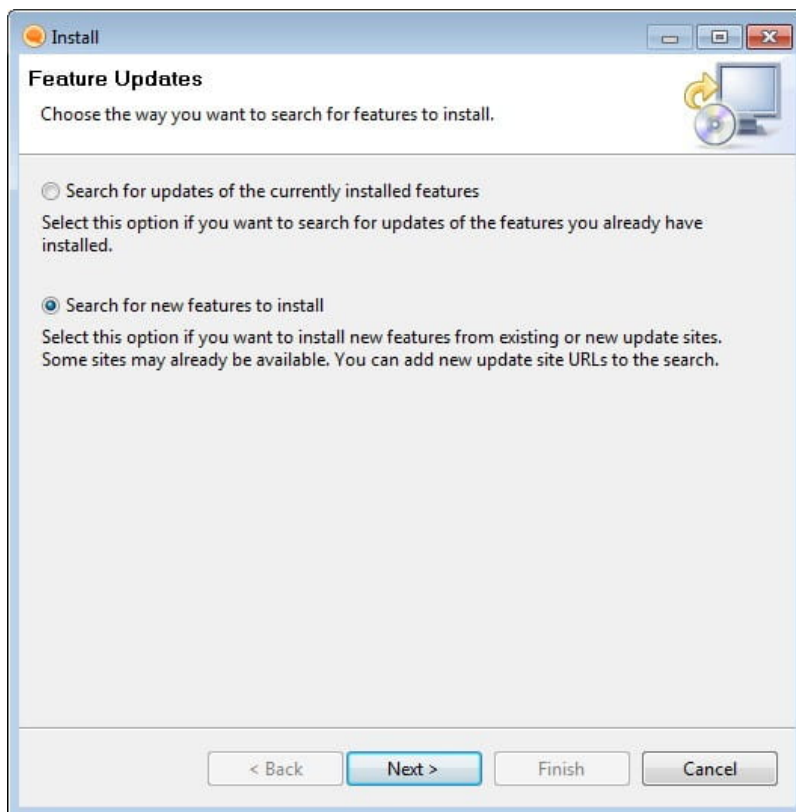
8. Complete the remaining steps in the wizard, following the instructions on your screen, and restart IBM Sametime to activate the plug-in.
9. Jabra Direct then states that the Jabra device and IBM Sametime are ready to use.

For IBM Sametime V9.0 or later follow these steps:

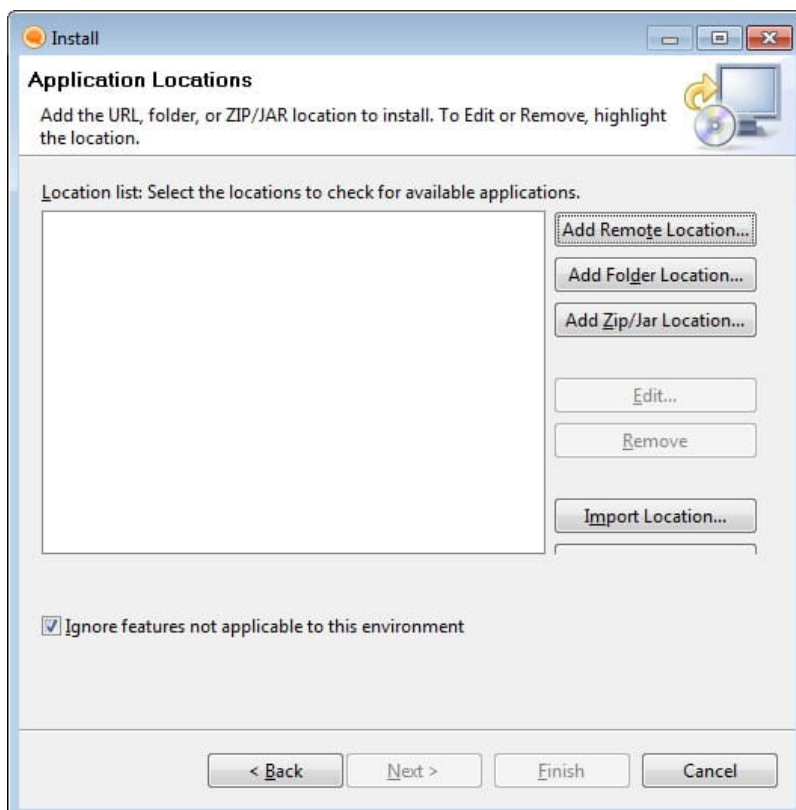
1. Start IBM Sametime and log in.
2. In the **IBM Sametime Connect** menu, select **Plug-ins, Install Plug-ins**.



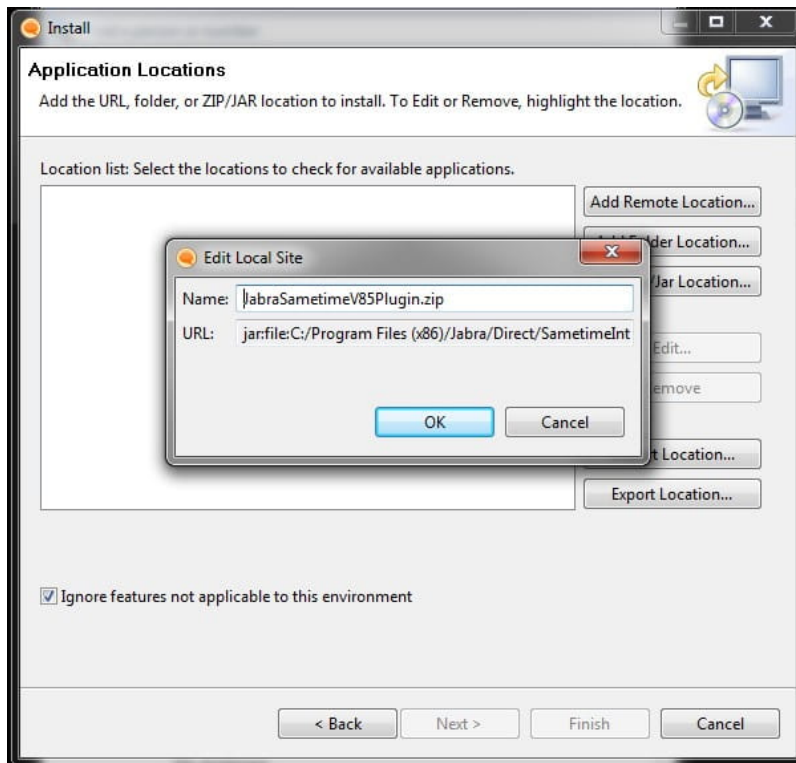
3. In the **Install/Update** wizard, select **Search for new features to install**, and then click **Next**.



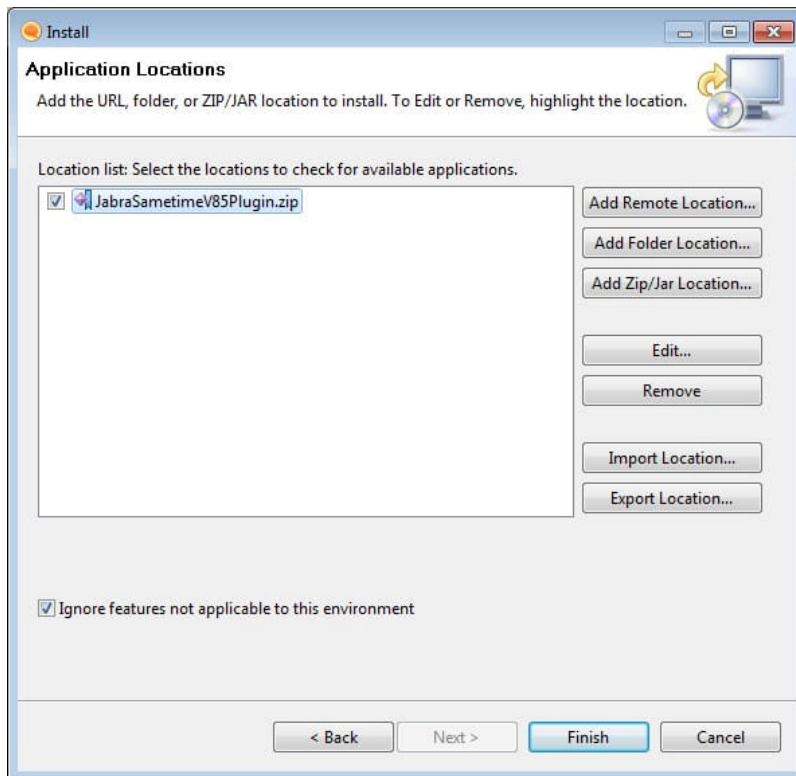
4. Click **Add Zip/Jar Location**.



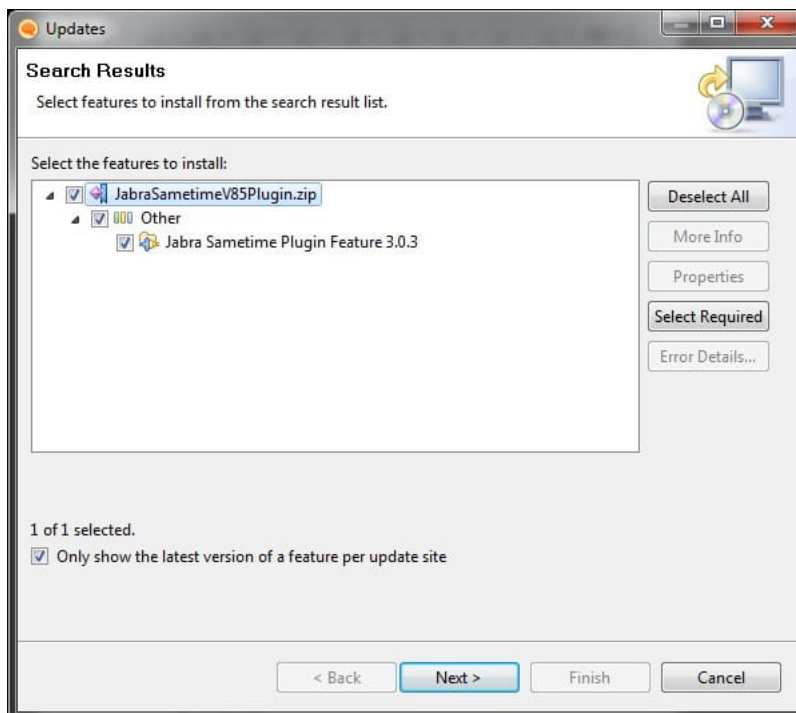
In the **Select Local Site Archive** dialog that opens, browse to the Jabra Direct installation folder path, C:\Program Files (x86)\Jabra\Direct\SametimeIntegration\JabraSametimeV85Plugin, select the **Jabra plug-in** ZIP archive, and then click **OK**. In the **Edit Local Site** dialog box, click **OK** as shown in the following screenshot.



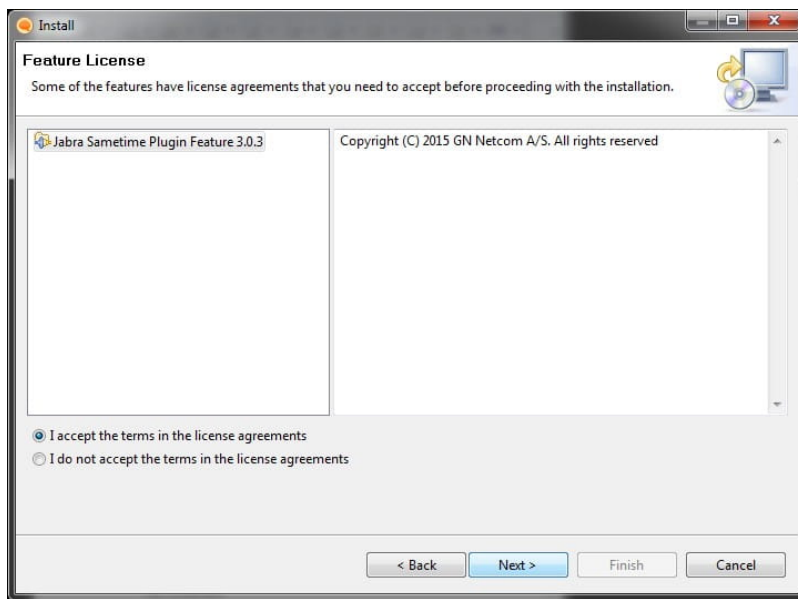
5. Select the **Jabra Sametime plug-in** zip file, and then click **Finish**.



6. In the **Updates** wizard, on the **Search Results** page, select all the check boxes, and then click **Next**.



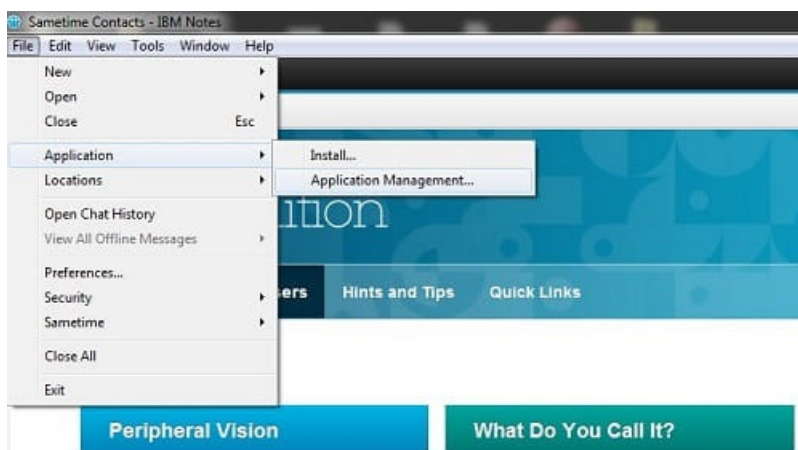
7. Accept the license agreement, and then click **Next**.



8. Complete the remaining steps in the wizard, following the instructions on your screen, and restart IBM Sametime to activate the plug-in.
9. Jabra Direct then states that the Jabra device and IBM Sametime are ready to use.

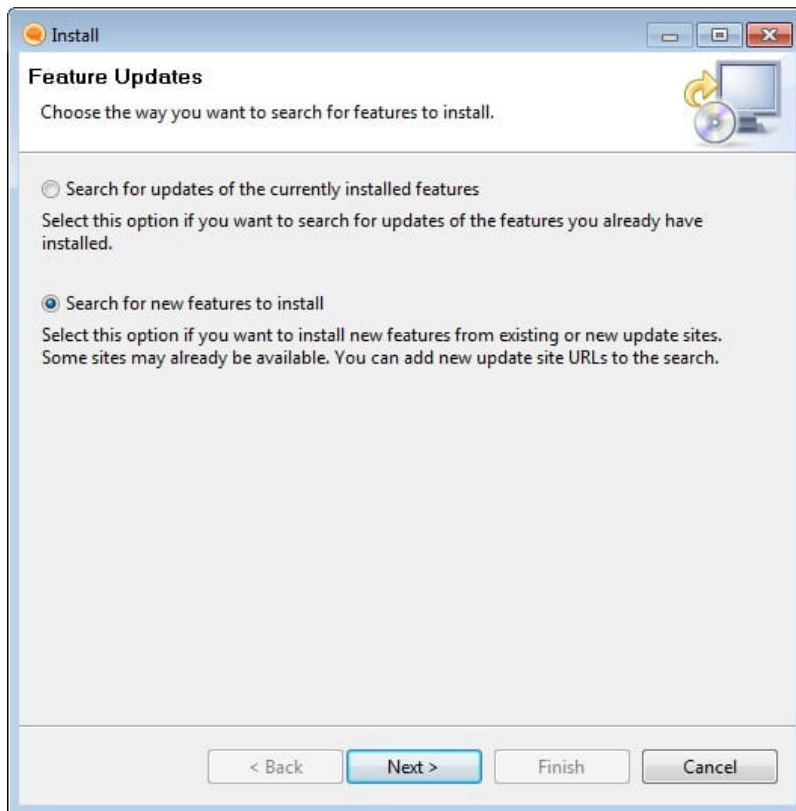
For IBM Sametime Embedded in Lotus Notes 9 or later versions follow these steps:

1. Start IBM Sametime embedded and log in.
2. Click **File**, select **Application**, and then select **Install**.

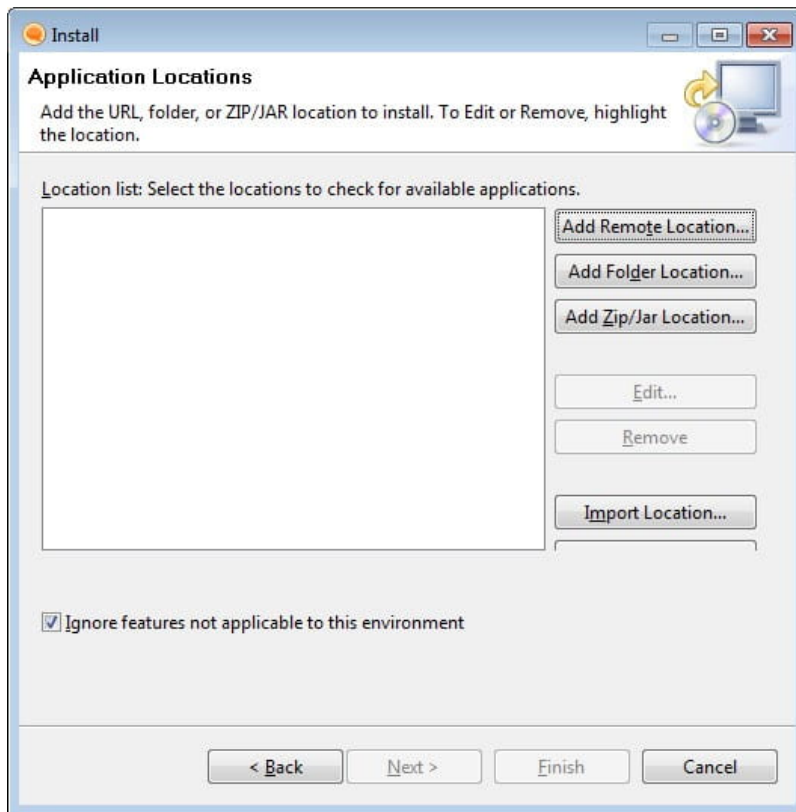


3. In the **Install/Update** wizard, select **Search for new features to**

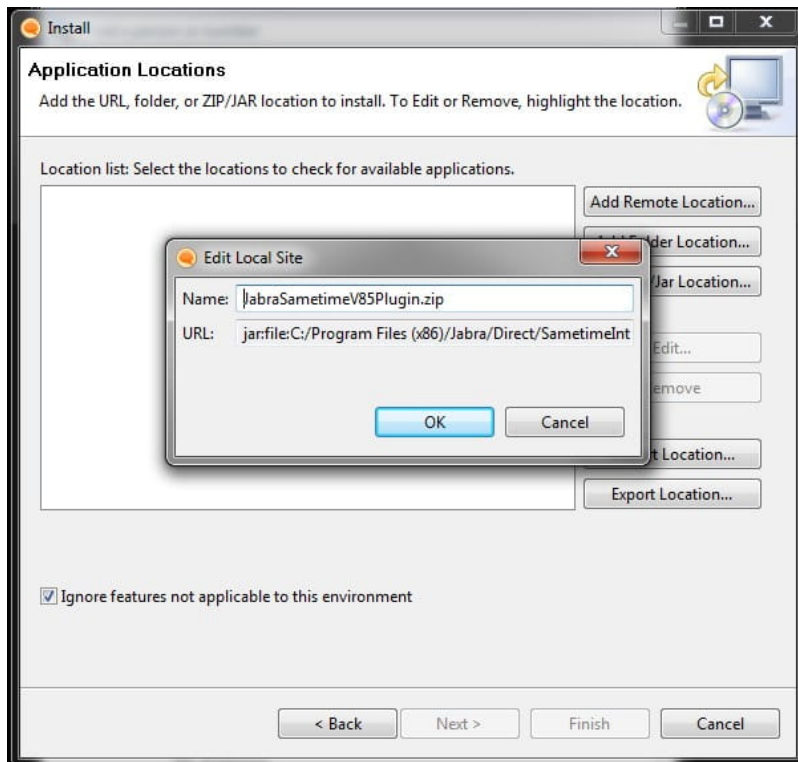
install, and then click **Next**.



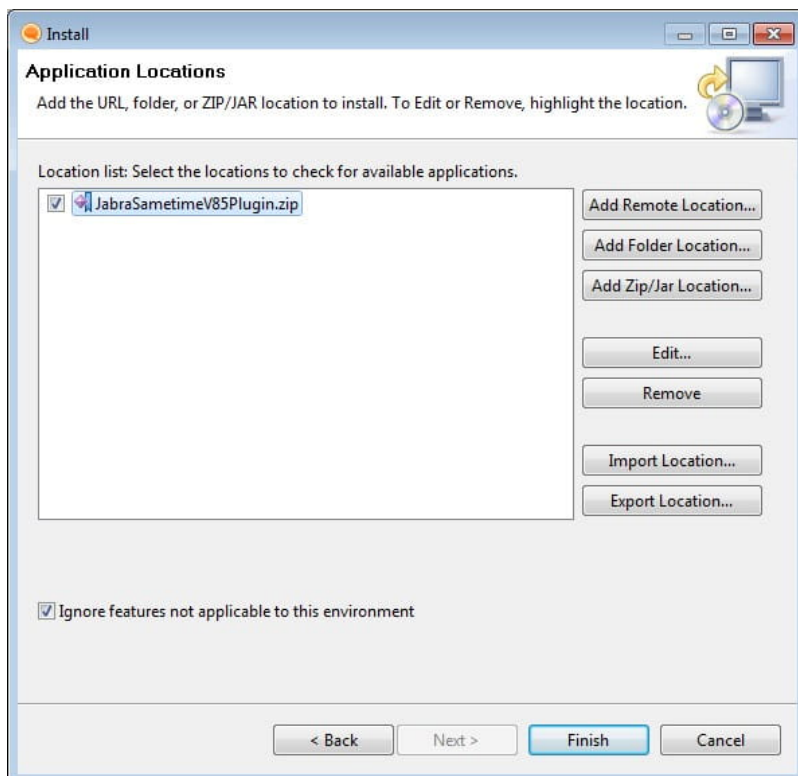
4. Click **Add Zip/Jar Location**.



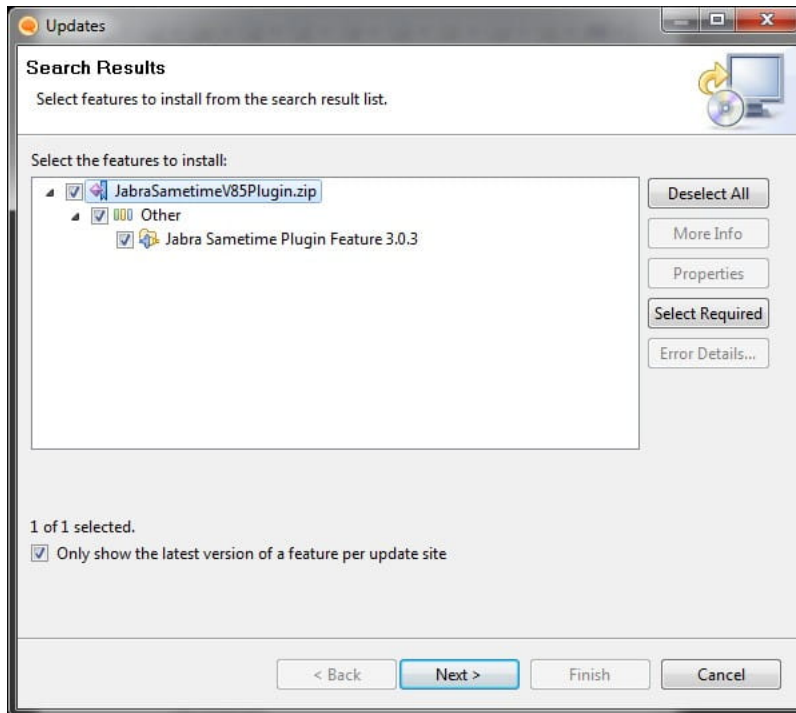
In the **Select Local Site Archive** dialog that opens, browse to the Jabra Direct installation folder path, C:\Program Files x86)\Jabra\Direct\SametimeIntegration\JabraSametimeV85Plugin, select the **Jabra plug-in** ZIP archive, and then click **OK**. In the **Edit Local Site** dialog box, click **OK** as shown in the following screenshot.



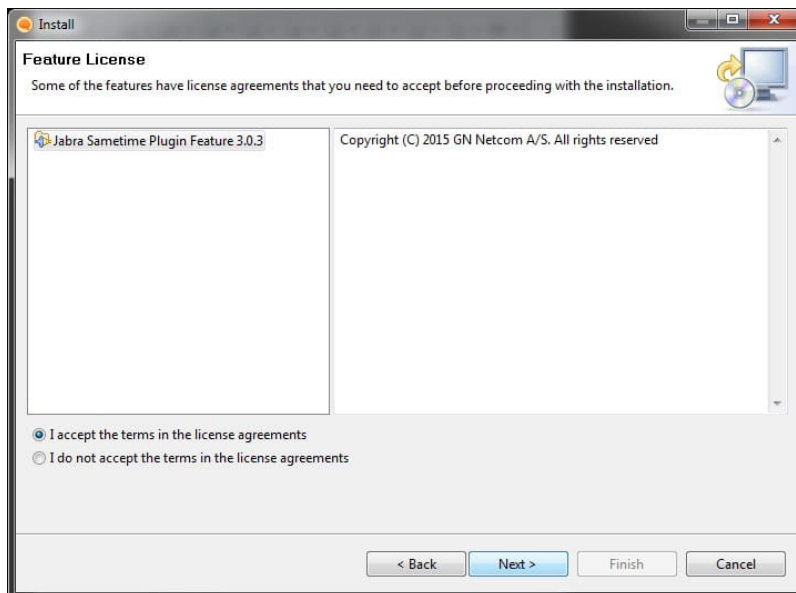
5. Select the **Jabra Sametime plug-in** zip file, and then click **Finish**.



6. In the **Updates** wizard, on the **Search Results** page, select all the check boxes, and then click **Next**.



7. Accept the license agreement, and then click **Next**.



8. Complete the remaining steps in the wizard, following the instructions on your screen, and then restart IBM Sametime to activate the plug-in.
9. Jabra Direct then states that the Jabra device and IBM Sametime are ready to use.

