

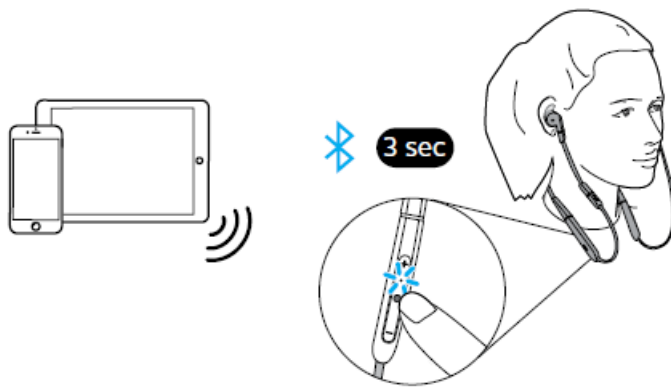
Jabra Evolve 65e MS

How do I pair my Jabra Evolve 65e with my mobile device?

To pair your Jabra Evolve 65e with your smartphone, tablet, or other handheld mobile device, follow these steps.

1. Turn on the Bluetooth setting on your mobile device.
2. Turn off your Jabra Evolve 65e by pressing and holding (3 seconds) the **Multi-function** button until the LED flashes red and the neckband vibrates.
3. To enter pairing mode, press and hold (3 seconds) the **Multi-function** button until the LED flashes blue. If you are wearing the earbuds, you will hear the pairing instructions.

Your earbuds are now ready to pair with your mobile device.



4. To pair, go to the Bluetooth menu on your mobile device and select the Jabra Evolve 65e from the list of available devices.
Enter “0000” (four zeros) if you are asked for a pin code.

Note

If pairing is not successful, try the pairing steps again, or try pairing with a different Bluetooth device. For troubleshooting tips, [see here](#).

Optionally, try using the [Bluetooth Pairing Guide](#) which provides detailed



steps for pairing with a mobile device.