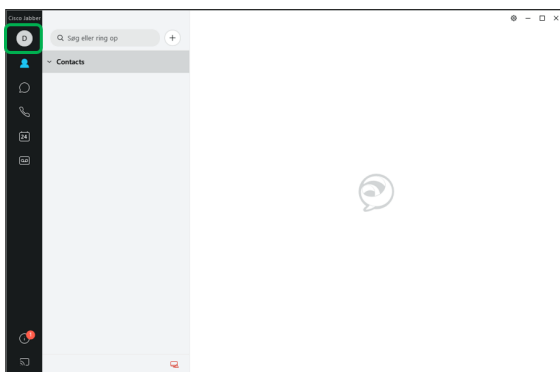


Jabra Biz 2400 USB Mono

How do I set up my Jabra device to work with Cisco Jabber?

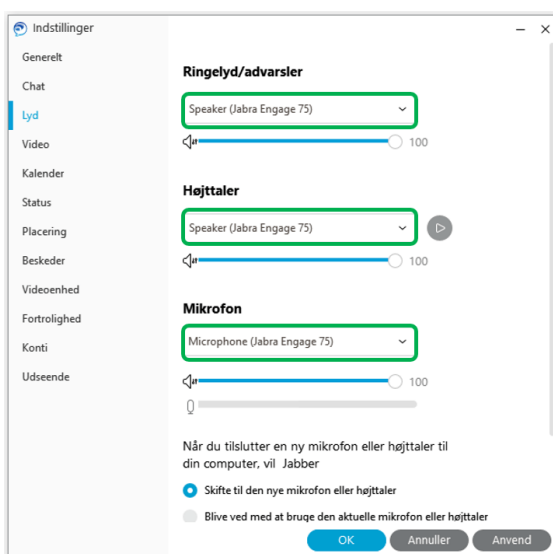
To select your Jabra device for use with Cisco Jabber, follow these steps.

1. Click on your profile picture at the top left corner of the Cisco Jabber window.



2. Click **Settings**, then **Audio**.
3. In **Audio**, select your Jabra device under all three options (Ringtone, Speaker, and Microphone).

If you are using a Jabra device with a connected Link adapter, select the Link adapter.



Note

Images and text are for guidance purposes only. Actual images and text may vary depending on the connected device and updates to the software.