

# Jabra Elite 75t - Black

## How do I charge my Jabra Elite 75t/Elite Active 75t?

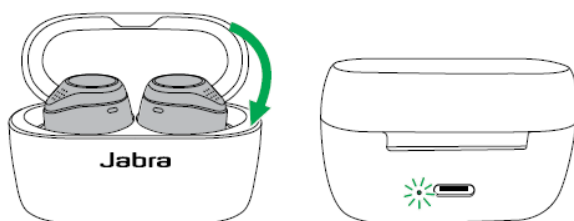
To charge your Jabra Elite 75t/Elite Active 75t, follow these guidelines.

### Charge the earbuds

Place the earbuds in the charging case and close the lid. It takes approximately 2 hours to fully charge the earbuds.

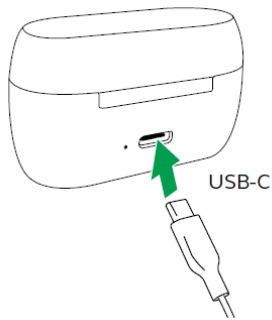
When you open the lid, the LEDs on the earbuds will flash red, yellow, or green to indicate the battery status of the earbuds. The LED on the back of the charging case indicates the battery status of the charging case.

When the earbuds are at low battery, 15 minutes of charge time will give a minimum of 45 minutes of battery. This fast charge option requires that the charging case be fully charged. You can check the current battery status of the earbuds and charging case in the Jabra Sound+ app.



### Charge the charging case using the USB cable

Plug the supplied USB-A to USB-C charging cable into the charging case and a USB-A power supply or certified wall charger. It takes approximately 2 hours and 20 minutes to fully charge the earbuds and the charging case using the USB cable. Third party USB chargers may take longer to charge the charging case.

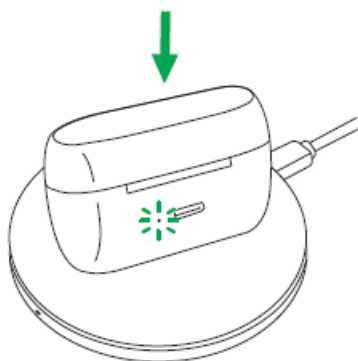


### **Charge the charging case using a wireless charging pad**

If your Jabra Elite 75t/Elite Active 75t is a wireless charging variant, you can charge the charging case and earbuds using a wireless charging pad that supplies 5 watts of power or more\*. Ensure the USB cable is not connected. Place the charging case on the wireless charging pad. The LED on the charging case will flash to indicate the charging case is placed correctly and is charging.

Depending on the current battery level, it takes approximately 6 hours to fully charge the charging case using a wireless charging pad. It takes up to 9 hours to fully charge the charging case and the earbuds. When fully charged, the LED on the charging case will stay lit green. Third party wireless charging pads may take longer to charge the charging case.

Because wireless chargers take longer to fully charge a device, this may result in the device becoming warm. The elevated temperature is within safe operating requirements and has no bearing on the lifespan or performance of the device.



\*For charging pads with a minimum of 5 watts, the charging case will always draw at a rate of 5 watts.