

Jabra Evolve2 85 - USB-C UC Stereo - Black

How do I reset my Jabra device to the default settings using Jabra Direct?

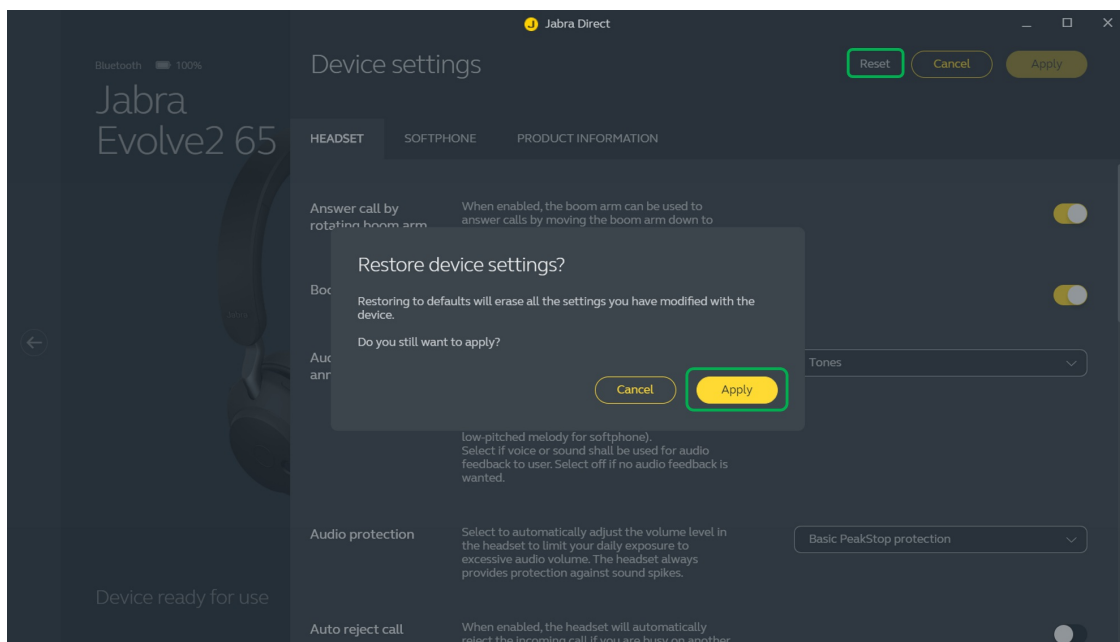
Prerequisites

- [Jabra Direct - latest version](#)

When you reset your Jabra device, previously paired devices and settings will be cleared.

To reset your Jabra device, follow these steps.

1. In Jabra Direct, select your device.
2. Click **Device**.
3. In **Device settings**, click **Reset** to open the **Restore device settings** dialog.
4. Click **Apply**.



Note

When you have reset your Jabra device, you will need to re-pair it with

any previously paired devices, such as your mobile device or the Jabra Link Bluetooth adapter.

Images and text are for guidance purposes only. Actual images and text may vary depending on the connected device and updates to the software.