

Jabra Evolve2 65 USB-C MS Mono with Charging Stand - Black

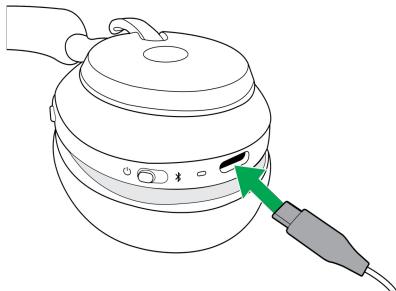
How do I charge my Jabra Evolve2 65?

You can charge your Jabra Evolve2 65 using the supplied USB charging cable or the optional charging stand. It takes approximately 1.5 hours to fully charge the battery. 15 minutes of charging time gives 8 hours of battery. The headset battery life is up to 37 hours.

Use the USB charging cable

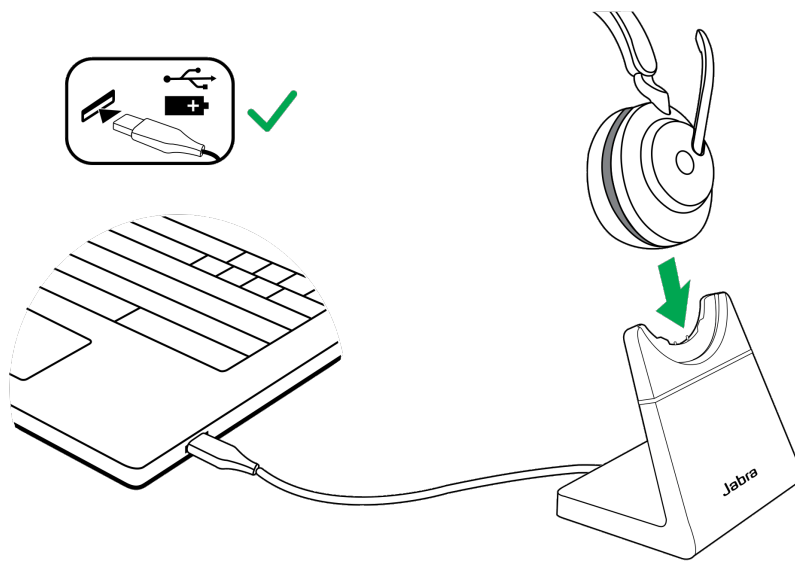
Plug the USB charging cable into the USB-C charging port on the right earcup and an available USB port on your computer. We recommend you use the supplied Jabra charging cable, although it is possible to use a compatible charger.

Right earcup



Use the charging stand (optional accessory)

Use the supplied USB charging cable to connect the charging stand to a powered USB port on your computer, and then dock the headset on the charging stand. Alternatively, plug the charging stand into a powered USB power supply.



Status LED on right earcup

- A solid green LED indicates the battery is full.
- A solid yellow LED indicates the battery is medium.
- A solid red LED indicates the battery is low.
- A flashing red LED indicates the battery is critically low.