

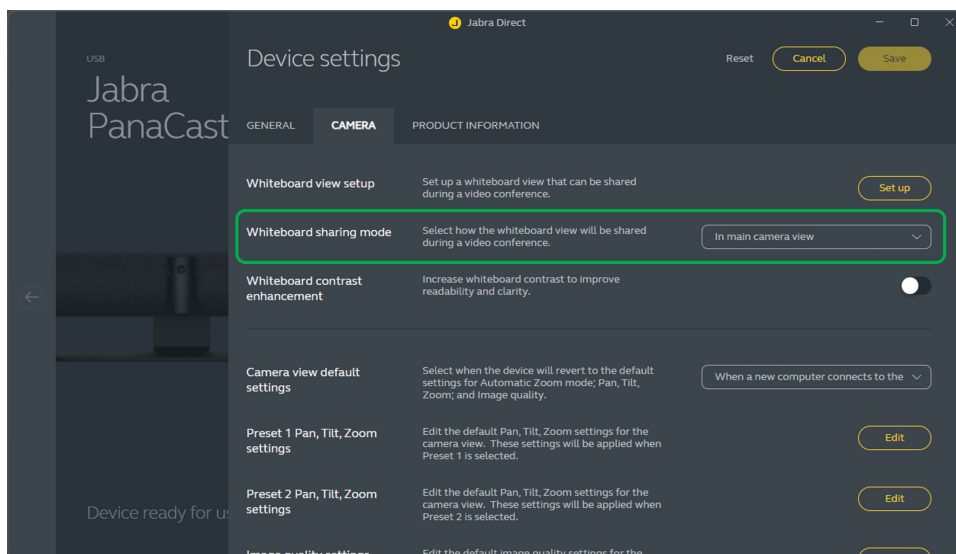
# Jabra PanaCast 50 - Black

## What is the difference between Whiteboard in main camera view and Whiteboard in separate content camera view?

The Jabra PanaCast 50 features two **Whiteboard sharing modes**:

- **In main camera view** - Toggling the whiteboard view on/off (using the camera controller in Jabra Direct or Jabra Sound+, or using the remote control) will switch between the view of the meeting room and the view of the whiteboard.
- **In separate content camera view\*** - A secondary content camera stream is enabled. This allows you to share both the view of the whiteboard and the view of the meeting room simultaneously, in dual streams.

You can configure the setting in Jabra Direct > PanaCast 50 > Settings > Camera > Whiteboard sharing mode. The default is set to In main camera view.




### Note

If Dynamic Composition is enabled, the whiteboard video will not be available.




\*Separate content camera view is not supported for macOS.

## Applicable products



Jabra PanaCast 50  
Room System ZR




Jabra PanaCast 50  
Room System MS




Jabra PanaCast 50 -  
Black



Jabra PanaCast 50 -  
Grey



Jabra PanaCast 50  
Room System 2 - IP



Jabra PanaCast 50  
Room System 2 - USB