

Jabra PanaCast 20

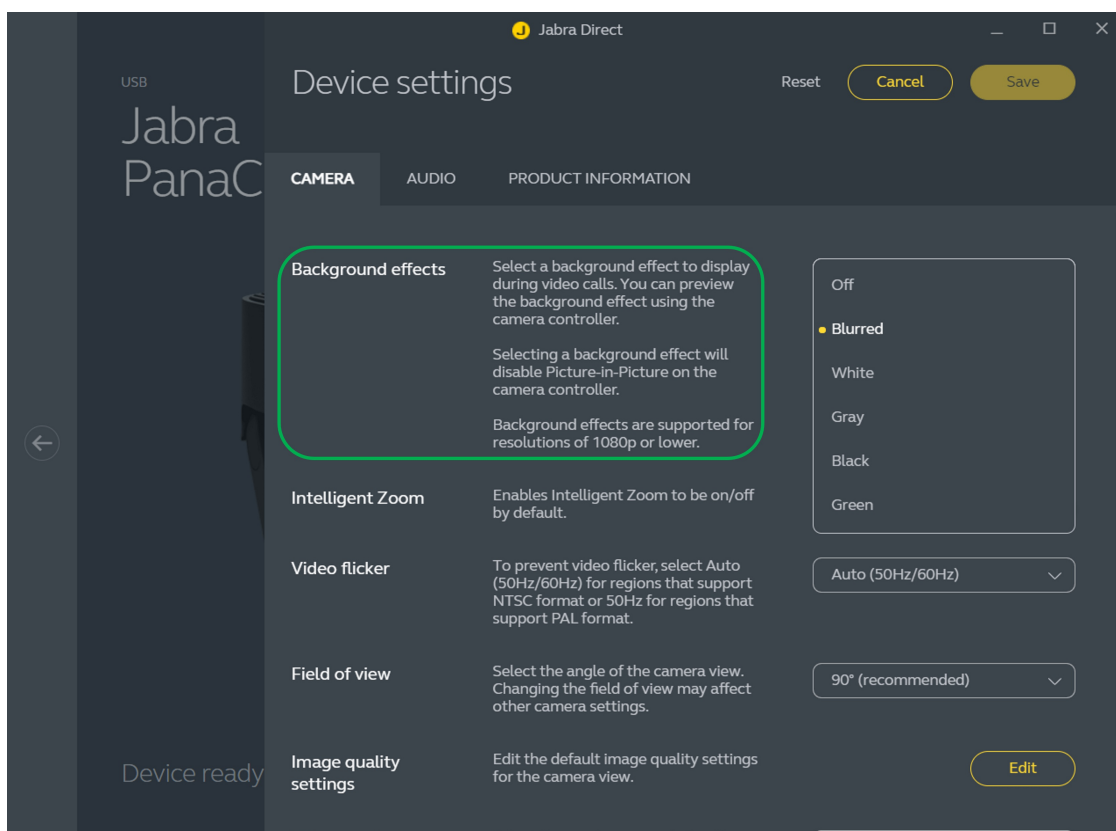
Can I apply a background blur effect to my Jabra PanaCast 20?

Prerequisites

- PanaCast 20 firmware version 4.2.9 or later
- [Jabra Direct - latest version](#)

You can apply a real-time blur effect or replace the video background with a solid color, directly on the PanaCast 20. This on-device background effect provides additional privacy and security when using the camera in the office, home, or other location.

To apply a background effect, go to Jabra Direct > PanaCast 20 > Settings > Camera > Background effects.



Notes

- Enabling a background effect requires a quick device reboot.

- When a background effects is set, the Picture-in-Picture feature is automatically disabled.
- Background effects are only supported for resolutions of 1080p or lower.