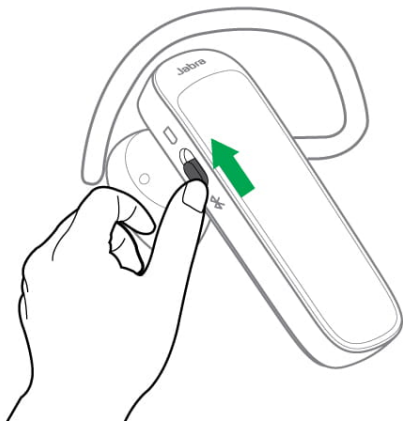


Jabra Talk 25 SE

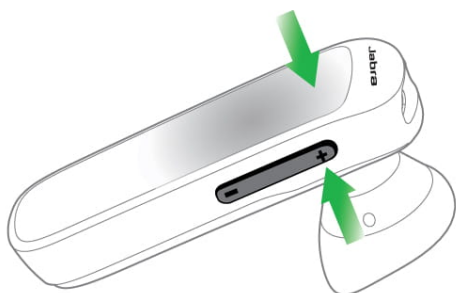
How do I reset my Jabra Talk 25/25 SE?

When you reset your Jabra Talk 25/25 SE, the list of devices that have been paired with it is cleared. Follow these steps to reset:

1. Turn on your Jabra Talk 25/25 SE by setting the **On/off** switch to the “on” position.



2. Simultaneously press and hold (6 seconds) the **Answer/end** button and the **Volume +** button, and then release the buttons.



3. Your Jabra Talk 25/25 SE is now reset, and it will shut down. Turn off your Jabra Talk 25/25 SE.

Note: When your Jabra Talk 25/25 SE has been reset, you will need to re-

pair with your smartphone. Remember to delete the previous pairing before you re-pair.