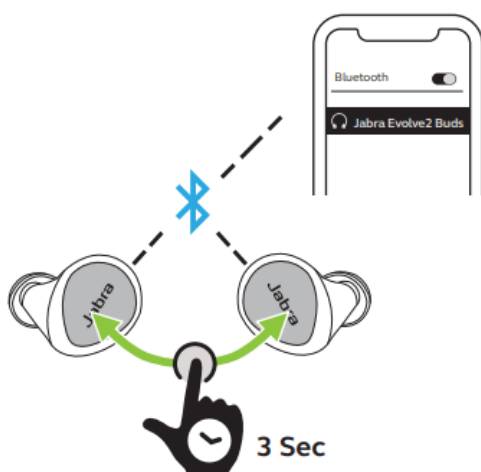


Jabra Evolve2 Buds - USB-A UC

How do I pair my Jabra Evolve2 Buds with my mobile device?

To pair your Jabra Evolve2 Buds with your handheld mobile device or tablet, follow these steps.

1. Turn on the Bluetooth setting on your mobile device.
2. Turn on your earbuds by removing them from the charging case. Alternatively, with the earbuds out of the charging case, simultaneously press and hold (3 seconds) the **Left** and **Right** buttons. The LEDs on both earbuds will turn green.
3. To enter pairing mode, simultaneously press and hold (3 seconds) the **Left** and **Right** buttons on the earbuds, until the LEDs on the earbuds flash blue. The earbuds are now ready to pair with your mobile device.
4. To pair, go to the Bluetooth menu on your mobile device and select the Jabra Evolve2 Buds from the list. Enter “0000” (four zeros) if you are asked for a pin code.



Note

If you want to use just one earbud, you must still pair both earbuds with your mobile device. After the pairing, you can place one of the earbuds in

the charging case.

In daily use, when you turn on the earbuds, they will automatically reconnect with the last previously paired device, if it is turned on and within range.

If pairing is not successful, try the pairing steps again, or try pairing with a different Bluetooth device. For troubleshooting tips, see [here](#).

Optionally, try using the [Bluetooth Pairing Guide](#) which provides detailed steps for pairing with your mobile device.