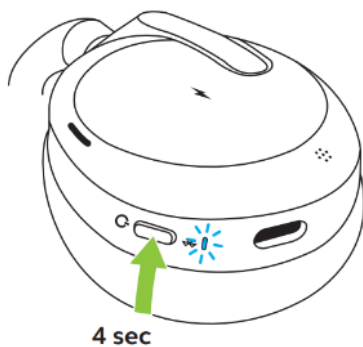


Jabra Elite Flex

How do I pair my Jabra Elite Flex with my mobile device?

To pair your Jabra Elite Flex with your smartphone, tablet, or other handheld mobile device, follow these steps.

1. Turn on the Bluetooth setting on your mobile device.
2. To enter pairing mode, press and hold (4 seconds) the **Power** button on the left earcup until the LED flashes blue. If you are wearing the headset, you will hear the pairing instructions.



3. To pair, go to the Bluetooth menu on your mobile device and select the Jabra Elite Flex from the list of available devices. If you are asked for a pin code, enter "0000" (four zeros).

When pairing with an Android device that has Google Fast Pair enabled, put the headset into pairing mode. You will be prompted on your nearby Android device if you wish to pair the headset.

Note

If pairing is not successful, try the pairing steps again, or try pairing with a different Bluetooth device. For troubleshooting tips, see [here](#).

Optionally, try using the [Bluetooth Pairing Guide](#) which provides detailed steps for pairing with your mobile device.