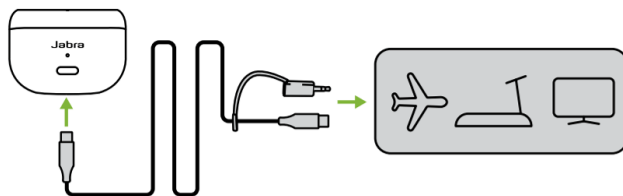


# Jabra Elite 10 Gen 2 - Denim

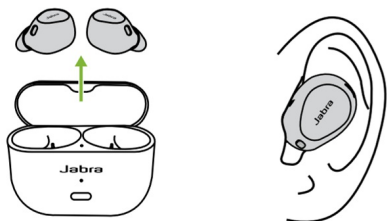
## How do I stream audio using my Smart case?

To stream audio from a device to your Jabra earbuds, follow these steps.

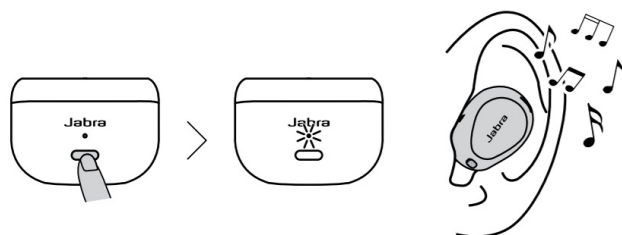
1. Plug the Smart case into an audio output port on the device using the cable provided. When plugging into a 3.5 mm port, attach the 3.5 mm jack to the USB-C connector on the cable provided and plug it into the device.



2. Remove the earbuds from the Smart case and insert them in your ears.



3. Press the Smart case button to stream audio from the device to your earbuds. The LED on the Smart case will flash white, and you will hear a tone notification in the earbuds.



### Note

Check with the device's manufacturer to confirm that the port you are connected to supports audio output.