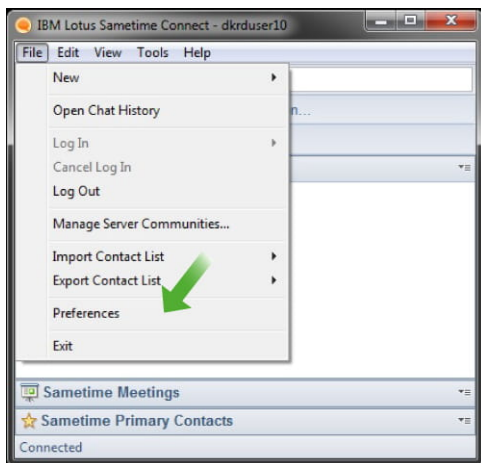


Jabra Evolve 10 USB-A Stereo

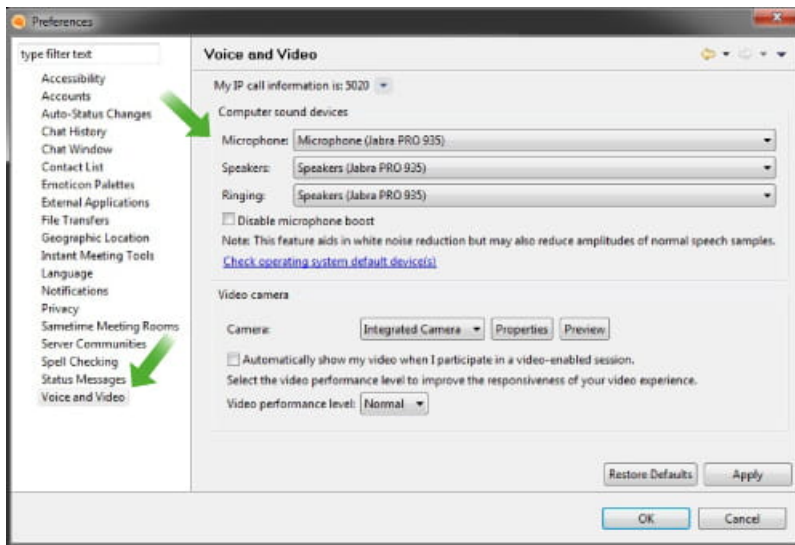
How do I set up my Jabra device to work with IBM Sametime for Windows?

To select your Jabra device for use with IBM Sametime, follow these steps.

1. Start IBM Sametime.
2. Select **File**, and then select **Preferences**.



3. Select **Voice and Video**.
4. For each of the audio settings **Microphone**, **Speakers**, and **Ringling**, select the Jabra device.



5. Click **Apply**, and then click **OK**.

Note

Images and text are for guidance purposes only. Actual images and text may vary depending on the connected device and updates to the software.