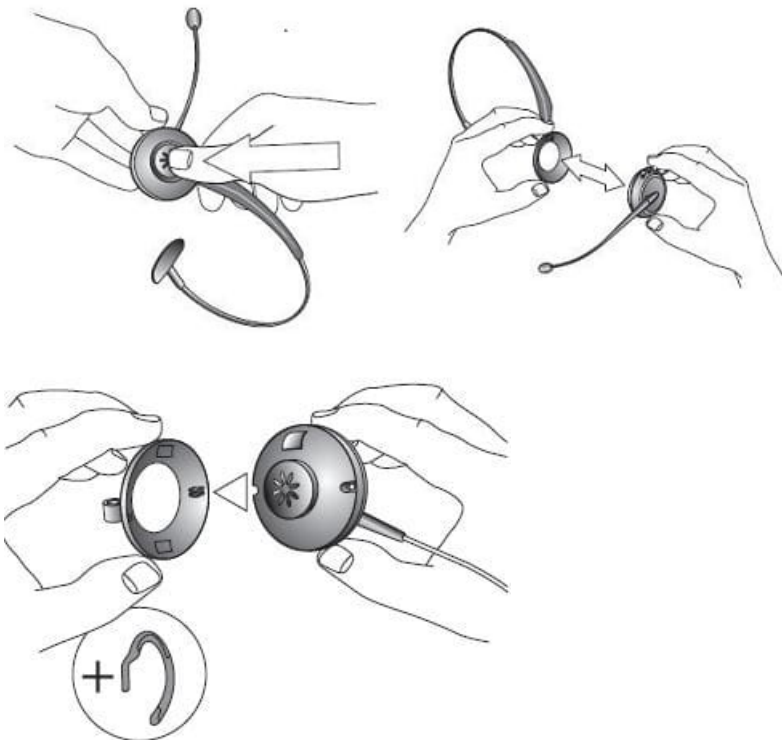


Jabra GN9125 Flex NC With GN1000 Remote Handset Lifter

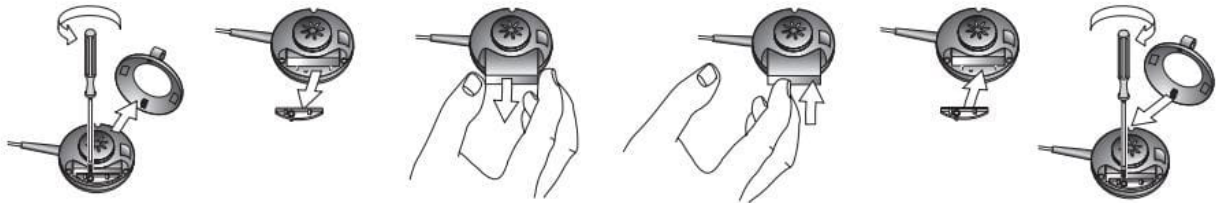
How do I perform a soft reset of my Jabra GN9120/GN9125 headset?

Resetting your device to the default settings will delete all previous settings. To perform a reset of your Jabra GN9120 or Jabra GN9125, follow these steps:

1. Unplug the base power supply from the power outlet.
2. Mono headset: Remove the ear cushion (including the ear plate).
Duo headset: On the side with the boom arm, remove the ear cushion (including the ear plate).
3. Remove the wearing style accessory (headband or ear hook) from the headset.



- Using a suitable screwdriver, unscrew the small plate that holds the battery in place.



- Remove the small plate that held the screw.
- Remove the battery for a minimum of 5 to 10 seconds.
- Reinsert the battery and screw the plate back on.
- Reassemble the headset with the appropriate wearing style accessory.
- Place the headset back onto the base.
- Plug the base power supply into the power outlet again.

The reset is now completed.

Note:

Removing and reinserting the battery does not affect the product warranty.