

# Jabra Go 6470

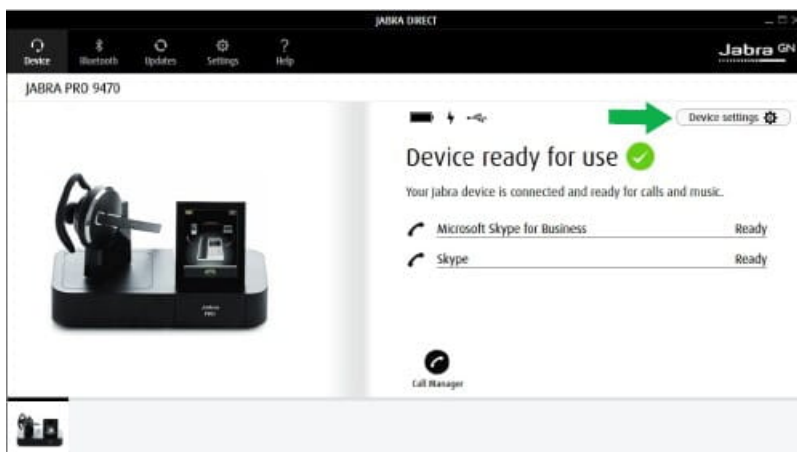
## How do I reset my Jabra device to the default settings using Jabra Direct?

### Prerequisites

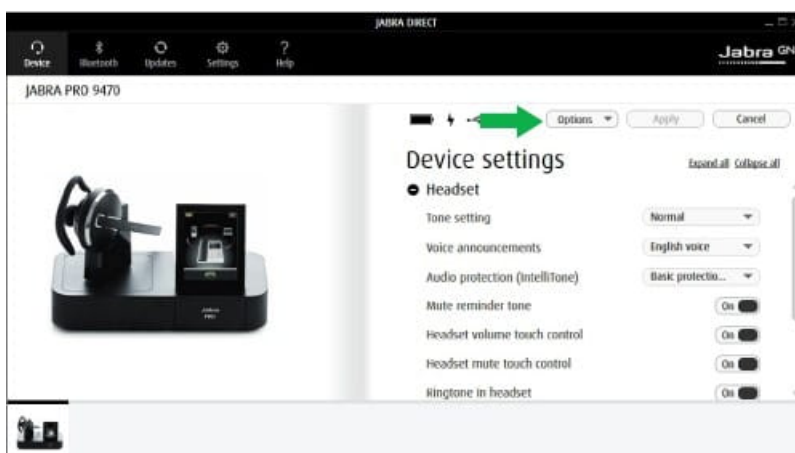
- [Jabra Direct version 3.x or earlier](#)

To reset your device, follow these steps.

1. In Jabra Direct, click **Device settings**.

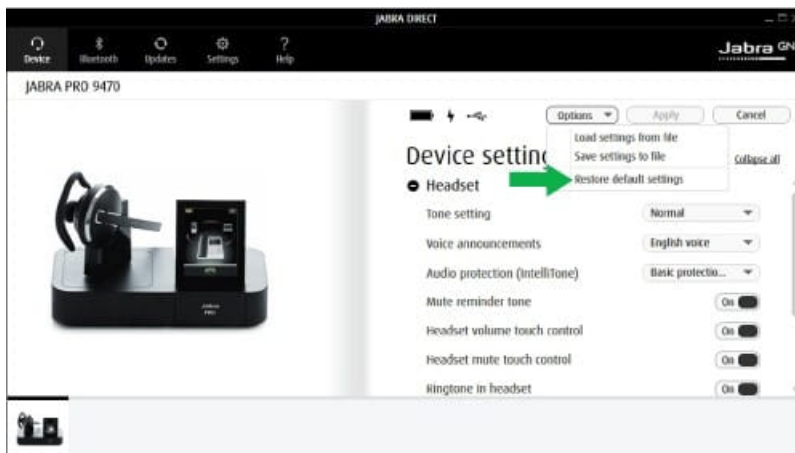


2. Click **Options**.



3. Click **Restore default settings**. When you reset your Jabra device to

the default settings, the previous settings will be deleted.



4. Click **Apply**.

### Note

When you have reset your Jabra device, you will need to re-pair it with any previously paired devices, such as your smartphone or the Jabra Link Bluetooth adapter.

Images and text are for guidance purposes only. Actual images and text may vary depending on the connected device and updates to the software.

# Applicable products

