

Jabra Pro 920 Mono

How do I reset my Jabra device to the default settings using Jabra Direct?

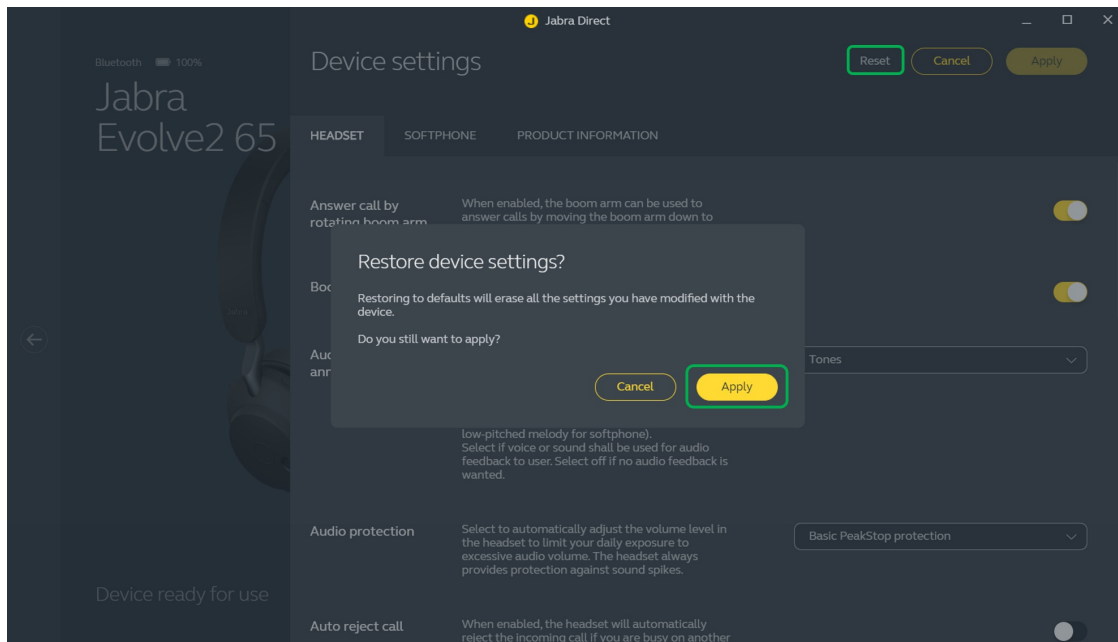
Prerequisites

- Jabra 14201-29 Service Cable (for Jabra Pro 920 only). Use this cable to connect your Jabra Pro 920 to a computer that has Jabra Direct installed. On some computers, you may have to remove the power plug from the Jabra Pro 920 base, connect the cable to the computer, and then reconnect the power plug to the Jabra 920 base.
- Jabra 14201-13 Mini USB to USB cable (for Jabra Pro 925 only). Use this cable to connect your Jabra Pro 925 to a computer that has Jabra Direct installed.
- [Jabra Direct - latest version](#)

When you reset your Jabra device, previously paired devices and settings will be cleared.

To reset your Jabra device, follow these steps.

1. In Jabra Direct, select your device.
2. Click **Device**.
3. In **Device settings**, click **Reset** to open the **Restore device settings** dialog.
4. Click **Apply**.



Note

When you have reset your Jabra device, you will need to re-pair it with any previously paired devices, such as your mobile device or the Jabra Link Bluetooth adapter.

Images and text are for guidance purposes only. Actual images and text may vary depending on the connected device and updates to the software.

Applicable products



Jabra Pro 920 Mono



Jabra Pro 920 Duo



Jabra Pro 925



**Jabra Pro 925 Dual
Connectivity**