

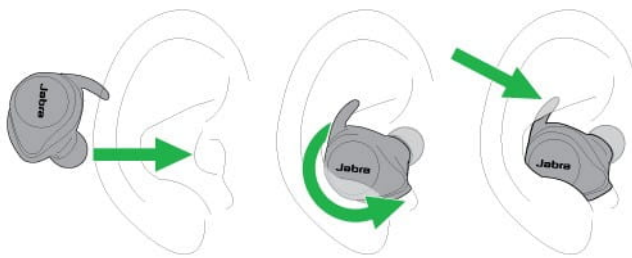
## Jabra Elite Sport (Original)

### Why does the heart rate monitor not respond when I run or cycle?

If the heart rate monitor does not respond during sustained physical exercise, it may be because the earbuds are not fitted properly and do not accurately detect your heart rate. See the following fitting recommendations.

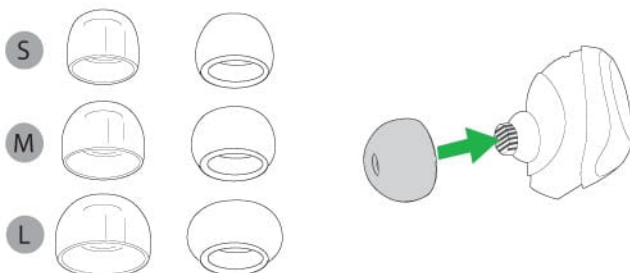
#### Position the EarWing

The top of the EarWing should fit tightly into the ridge of the ear.



#### Select the correct EarGel size

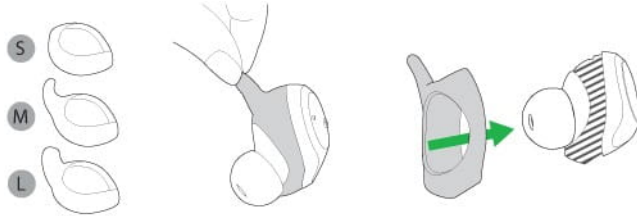
To find the best fit and for optimal audio experience, try each EarGel size, both the silicon and the foam types. The fit should feel tight and secure in your ear.



#### Select the correct EarWing

For the most secure fit during your workout, and for accurate heart rate monitoring, try each of the different EarWing styles. Remove the current EarWing and pull the new EarWing onto the earbud, as shown. You may have to stretch the EarWing into position. We recommend you try the

small comfort wing which is already on the earbud, with all EarGels sizes. You can then try the medium or large EarWing.



## Applicable products



**Jabra Elite Sport**  
(Lime Green Grey)



**Jabra Elite Sport**  
(Original)



**Jabra Elite Sport**  
(Upgrade)