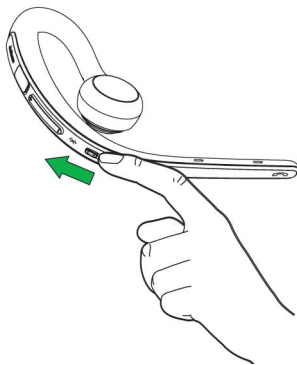


# Jabra Storm

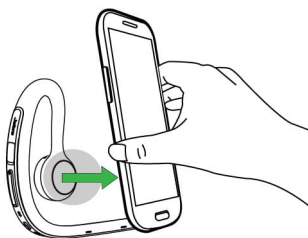
## How do I pair my Jabra Storm with my mobile phone using NFC?

To pair your Jabra Storm with your smartphone, tablet, or other mobile device using NFC, follow these steps.

1. Turn on NFC on your mobile device.
2. Turn on your Jabra Storm by sliding the **On/off** switch to the “on” position.



3. To pair, locate the NFC zone on your Jabra Storm and place it against the NFC zone on your mobile device.  
Enter “0000” (four zeros) if you are asked for a pin code. Your mobile device may prompt you to accept the pairing.



### Note

If pairing is not successful, try the pairing steps again, or try pairing with

a different Bluetooth device. For troubleshooting tips, [see here](#).

Optionally, try using the [Bluetooth Pairing Guide](#) which provides detailed steps for pairing with a mobile device.