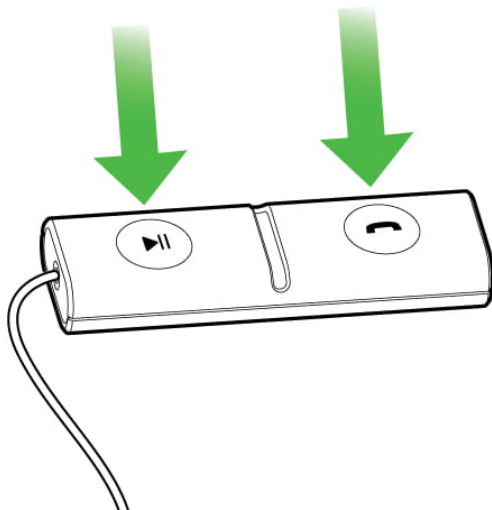


Jabra Streamer

How do I reset my Jabra Streamer?

When you reset your Jabra Streamer, the list of devices that have been paired with it is cleared. Follow these steps to reset:

1. Turn on your Jabra Streamer.
2. Simultaneously press and hold (5 seconds) the **Play/pause** button and the **Answer/end** button until the LED turns white.



Your Jabra Streamer is now reset and ready to re-pair with your mobile phone. Remember to delete the previous pairing before you re-pair.