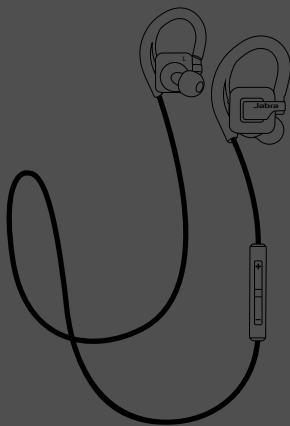


**Jabra**<sup>®</sup>  
YOU'RE ON

# JABRA STEP WIRELESS



User Manual

[jabra.com/stepwireless](http://jabra.com/stepwireless)

A BRAND BY

**GN Netcom**

---

© 2014 GN Netcom A/S. All rights reserved. Jabra® is a registered trademark of GN Netcom A/S. All other trademarks included herein are the property of their respective owners. The Bluetooth® word mark and logos are owned by the Bluetooth SIG, Inc. and any use of such marks by GN Netcom A/S is under license. (Design and specifications subject to change without notice).

---

MADE IN CHINA  
MODEL: OTE23



**Declaration of Conformity** can be found on [www.jabra.com/CP/US/declarations-of-conformity](http://www.jabra.com/CP/US/declarations-of-conformity)

# CONTENTS

1. WELCOME .....	4
2. HEADSET OVERVIEW .....	5
2.1 INCLUDED ACCESSORIES	
3. HOW TO WEAR.....	6
3.1 CHANGING EARGELS	
3.2 USING THE GELHOOK™	
4. HOW TO CHARGE THE BATTERY.....	8
5. HOW TO CONNECT.....	9
6. HOW TO USE .....	10
6.1 MULTIPLE CALL HANDLING	
6.2 LIST OF VOICE GUIDANCE	
7. SUPPORT .....	14
7.1 FAQ	
7.2 HOW TO CARE FOR YOUR HEADSET	
8. TECHNICAL SPECIFICATIONS .....	15

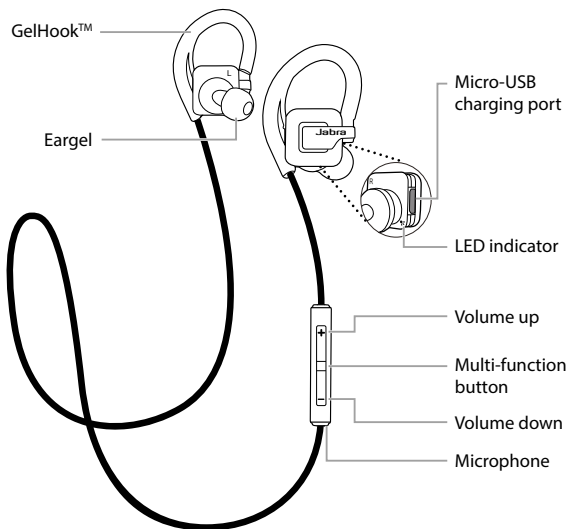
# 1. WELCOME

Thank you for using the Jabra Step Wireless. We hope you will enjoy it!

## **JABRA STEP WIRELESS FEATURES**

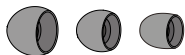
- Cable controls for easy music and call management
- Weather and dust resistant
- Secure comfort fit

## 2. HEADSET OVERVIEW



### 2.1 INCLUDED ACCESSORIES

---

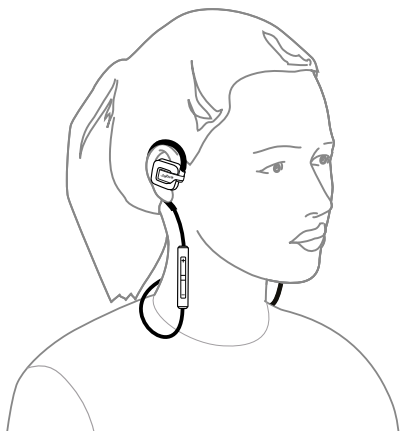


3 Eargels



USB cable

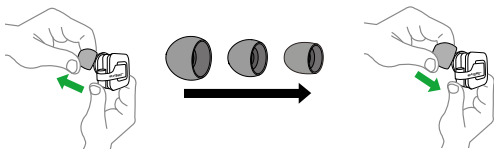
## 3. HOW TO WEAR



### 3.1 CHANGING EARGELS

---

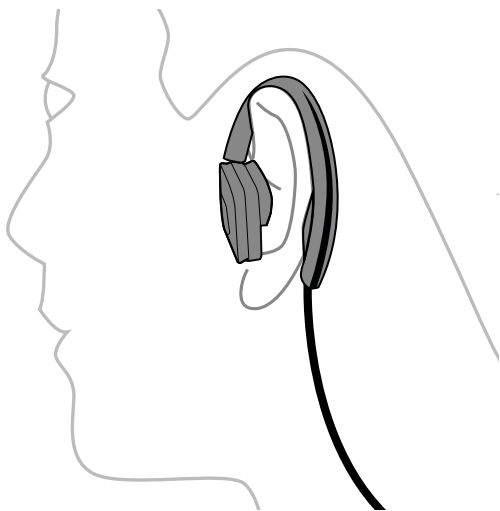
Choose between 3 Eargels sizes for optimal fit and comfort.



## 3.2 USING THE GELHOOK™

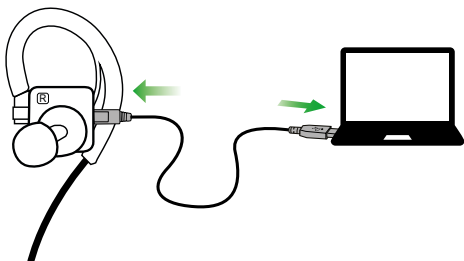
---

The GelHook™ provides optimal fit and stability.



## 4. HOW TO CHARGE THE BATTERY

Gently pull open the charging cover on the right earbud to expose the micro-USB port. Plug the USB cable into the headset and into your PC to begin charging.



It takes approx. 2.5 hours to fully charge the headset.

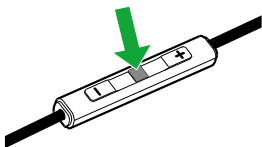


## 5. HOW TO CONNECT

The first time the headset is turned on, it will automatically attempt to connect to any mobile phone that has Bluetooth enabled. Simply select the Jabra Step from the list of Bluetooth devices on your mobile phone to connect.

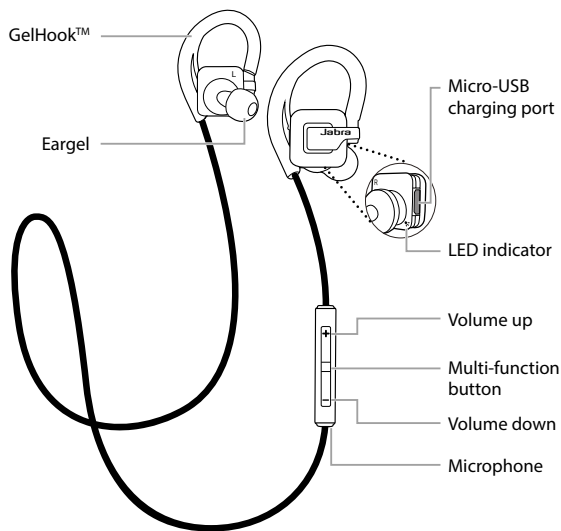
### TO CONNECT TO A NEW OR SECOND MOBILE PHONE:

1. Ensure Bluetooth on your mobile phone is turned on.
2. Press and hold (5 secs) the **Multi-function** button on the headset until the LED rapidly flashes blue.
3. Select the Jabra Step from the list of Bluetooth devices on your mobile phone to connect.



**NOTE:** If two mobile phones have been connected to the Jabra Step Wireless, you may need to select which phone will be used for calls/music. Simply open the Bluetooth menu on the mobile phone you wish to use for calls/music and select the Jabra Step Wireless from the list of devices.

## 6. HOW TO USE



## CALLS AND MUSIC

On/off Press and hold (3 secs) the **Multi-function** button until the LED flashes

---

Play/pause music Tap the **Multi-function** button

---



Answer/end call Tap the **Multi-function** button

---

Reject call Double-tap the **Multi-function** button

---

Redial last number Double-tap the **Multi-function** button when not on a call

---

Adjust volume Tap the **Volume up** or **Volume down** button

---



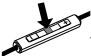
Skip track Press and hold (1 secs) the **Volume up** or **Volume down** button

---

## 6.1 MULTIPLE CALL HANDLING

---

The headset can accept and handle multiple calls simultaneously.

FUNCTION	ACTION
End current call and answer incoming call	Tap the <b>Multi-function</b> button
 Switch between held call and active call	Press and hold (2 secs) the <b>Multi-function</b> button
Put current call on hold and answer incoming call	Press and hold (2 secs) the <b>Multi-function</b> button
Reject incoming call, when on a call	Double-tap the <b>Multi-function</b> button

## 6.2 LIST OF VOICE GUIDANCE

---

CLICK TO LISTEN	WHAT YOU HEAR
	Hello
	Goodbye
	Pairing mode

---

# 7. SUPPORT

## 7.1 FAQ

---

View all FAQs on [jabra.com/stepwireless](https://jabra.com/stepwireless)

## 7.2 HOW TO CARE FOR YOUR HEADSET

---

- Always store the headset with the power off and safely protected.
- Avoid storage at extreme temperatures (above 85°C/185°F or below -40°C/-140°F). This can shorten battery life and may affect the headset.

## 8. TECHNICAL SPECIFICATIONS

JABRA STEP WIRELESS	SPECIFICATION
Weight:	16.5g
Dimensions:	H 20mm x W 20mm x D 16mm
Microphones:	4mm Omni-directional microphone
Speaker:	10mm dynamic speaker
Operating range:	10m/33ft (phone dependent)
Bluetooth version:	4.0
Paired devices:	Up to 8, connected to two at the same time (MultiUse™)
Supported Bluetooth profiles:	A2DP (v1.2), Hands Free Profile (v1.6), Headset profile (v1.2), AVRCP (v1.5)
Talk/music time:	Up to 4 hours
Standby time:	Up to 6 days
Operating temperature:	-24°C to 70°C (-11°F to 158°F)
Storage temperature:	-40°C to 85°C (-40°F to 185°F)
Pairing passkey or PIN:	0000

